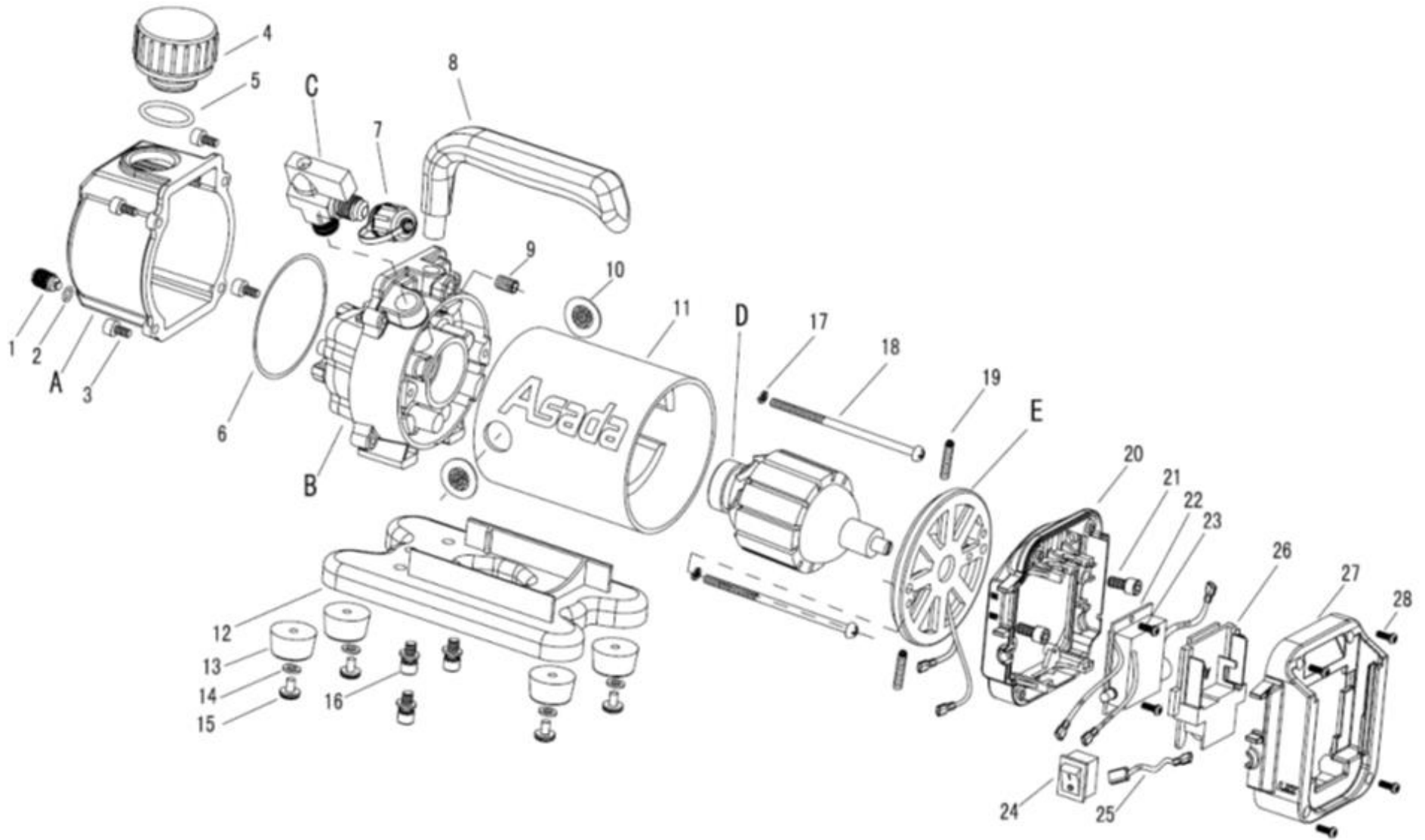


CORDLESS VACCUM PUMP 1.5CFM



CORDLESS VACCUM PUMP 1.5CFM PARTS LIST

#	CODE	PARTS	QTTY	REMARK
A	VP008	OIL TANK ASSY (INCLUDE #1.#2.#4.#5)	1	
1	VP045	DRAIN VALVE M12 X 1.5	1	
2	VP046	O LING ϕ 9 X 2.0	1	
3	VP011	HEXAGON BOLT M5 X 16	4	
4	VP012	EXHAUST PORT C1 COMPLETE	1	
5	VP013	O LING ϕ 26 X 2.2	1	
6	VP014	O LING ϕ 95 X 3.1	1	
B	VP015	B COMBINATION (TRESTEL & PUMP ASSY.)	1	
C	VP016	C COMBINATION (90° ball valve -black rotary knob INCLUDE #7)	1	
7	VP017	INLET PORT CAP 3# (5/16SAE)	1	
8	VP018	HANDLE DC18V	1	
9	VP019	HEXAGON BOLT M8 X 8	1	
10	VP020	InNLET PORT FILTER DC18V	2	
11	VP021	STATOR	1	
12	VP022	BASE 5#(PA6)	1	
13	VP023	BASE FOOT 1#	4	
14	VP024	FLAT GASKET ϕ 4	4	
15	VP025	SCREW M4x10	4	
16	VP026	HEXAGON BOLT M5x16	3	
17	VP027	SPRING GASKET ϕ 5	2	
18	VP028	LONG LEAD SCREW M5x100	2	
19	VP029	CARBON BRUSH SPRING DC18V	2	
20	VP030	FRONT COVER FOR BATTERY HOLDER DC18V	1	
D	VP031	D COMBINATION(MOTOR ROTOR DC18V)	1	
E	VP032	E COMBINATION(MOTOR BACK COVER DC18V) *INCLUDE CARBON BRUSH	1	
21	VP066	CROSS HEAD BOLT M5 \times 12	2	
22	VP034	CIRCUIT BOARD DC18V-1	1	
23	VP035	CROSS ROUND HEAD SELF-DRILLING BOLT M3x10	2	
24	VP047	POWER SWITCH	1	RED COLOR
25	VP037	BLACK CONNECTING LINE	1	
26	VP038	AS TERMINAL 643874 2	1	
27	VP039	BACK COVER FOR BATTERY HOLDER DC18V	1	
28	VP035	CROSS ROUND HEAD SELF-DRILLING BOLT M3x10	4	
	VP042	ALMINIUM CASE BELT	1	FOR CARRY CASE
	VP071	CARBON BRUSH SET	2	
	SS0266	HIGH TEMPERATUR CAUTION STICKER	1	
	SS0294	OIL CONFIRMATION STICKER	1	