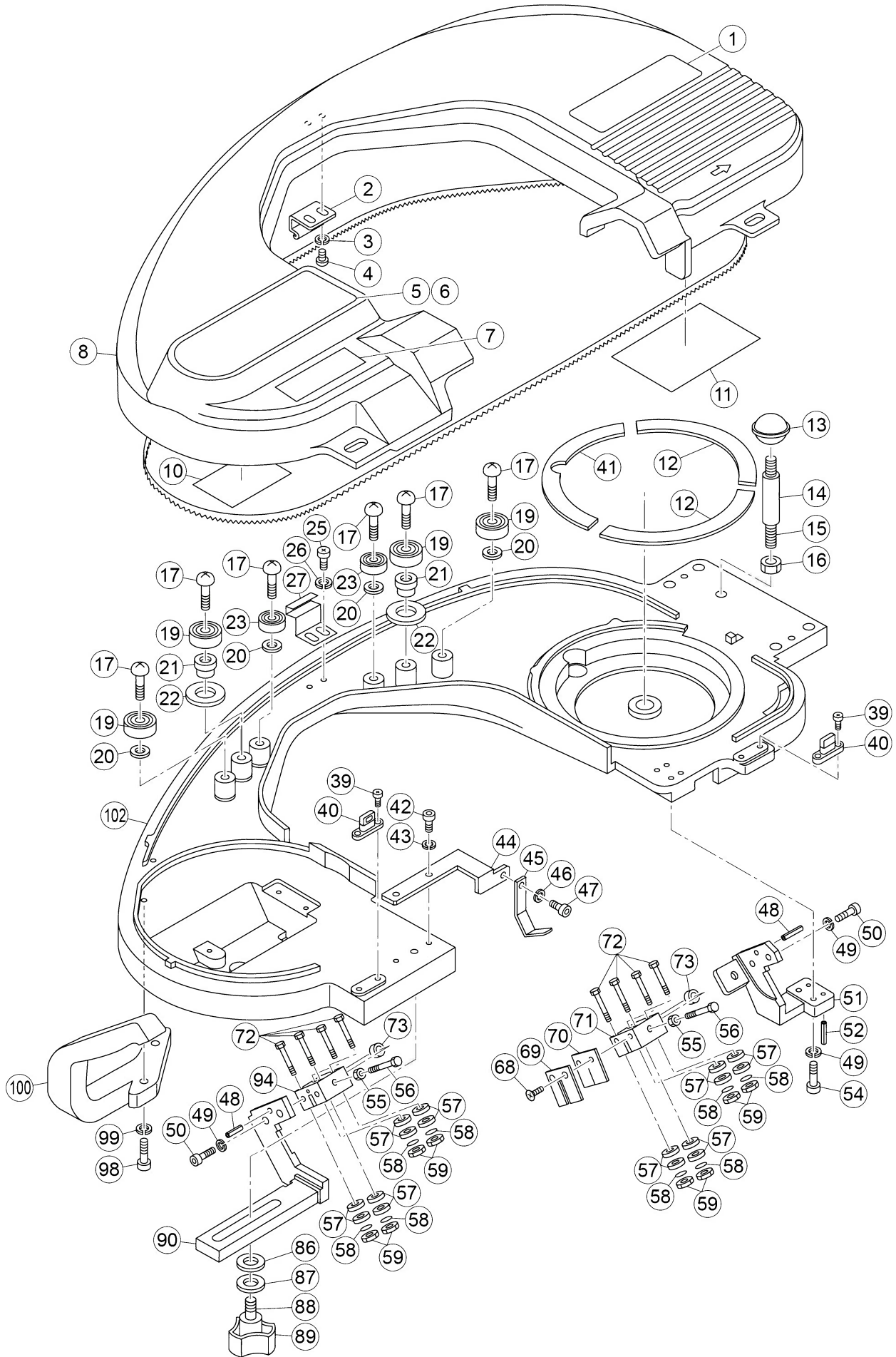


# BAND SAW BAND SAW BEAVER 6, 6F



# BAND SAW

## BAND SAW BEAVER 6, 6F

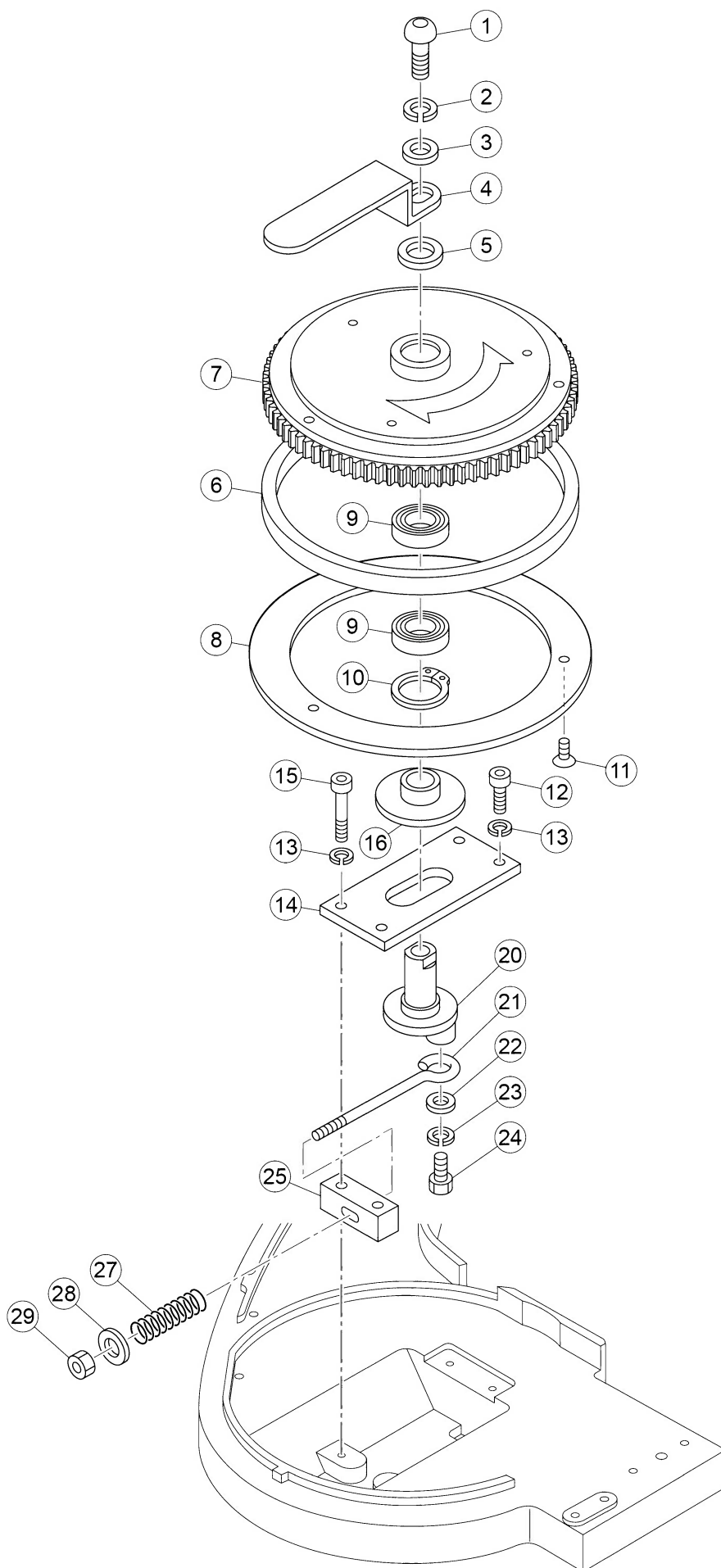


# Blade Guide & Frame

Ref. No.	Code No.	Parts Name	Qty	Remark
1	BB008	BB6 ASADA PLATE	1	
2	BS383	COVER HOOK A	1	
3	81112	SPRING WASHER M5	2	81125 ⇒ 81112 (2011.1)
4	82181	PAN-HEAD SCREW 6 x 10	2	82195 ⇒ 82181 (2011.1)
5	BB007	STICKER BB6	1	
6	BB106	STICKER BB6F	1	
7	BB037	BB6 WARNING SEAL	1	
8	BB006	FRONT COVER BB6	4	(※2)
10	BB019	BB6 BLADE EXCHANGE SEAL	1	
11	BB038	BB6 BLADE ADJUSTMENT SEAL	1	
12	BS053	CHIP GUARD B	2	
13	70612	PLASTIC BALL PB30 X M10RD	1	
14	EP185	RELIEF HOSE	1	85405 ⇒ EP185 (2009.5)
15	70629	SCREW M10X90L BLACK	1	
16	81024	HEX NUT 10	1	
17	82302	BUTTON SCREW 10 x 30	6	
19	84170	BALL BEARING 6200ZZ	4	
20	70150	SNAP RING S-10	4	
21	BS422	B185 BEARING COLLAR	2	
22	BB031	BLADE SET COLLOR BS185/BB6	2	
23	84113	BALL BEARING 6000ZZ FOR BS170	2	
25	82200	PAN-HEAD SCREW 6x10	2	82201 ⇒ 82200 (2011.1)
26	81113	SPRING WASHER	2	81118 ⇒ 81113 (2011.1)
27	BB004	BB6 COVER HOOK B	1	
39	82802	PAN HEAD TAPPING SCREW M4 × 10L	4	82968 ⇒ 82802 (2013.5)
40	70570	COVER STOPPER	2	(※1) For old type (Black plastic including No. 39)
40	71084	COVER STOPPER No.2-BN	2	(※1) For new type (Metal) (2013.9)
41	BS086	CHIP GUARD A	1	
42	80161	STOP BOLT	2	
43	81251	SPRING WASHER CM6	2	70152 ⇒ 81251 (2009.8)
44	BS407	B185 DOCK PLATE	1	
45	BS302	BS185 DOCK	1	
46	70149	WASHER 5	1	81238 ⇒ 70149 (2009.8)
47	80156	STOP BOLT M5x8	1	
48	83107	R-PIN 5x15L	2	
49	81113	SPRING WASHER	4	
50	80166	STOP BOLT 6x20 (80116)	2	
51	BS332	BLADE GUID R BS185	1	
52	83023	R-PIN 5 X 25	4	
54	80167	STOP BOLT 6x25	2	
55	81066	HEX NUT M6	2	
56	BS331	BACK-GUIDE PIN	2	
57	84416	BALL BEARING 625ZZ	16	
58	70149	WASHER 5	8	
59	81068	U-NUT 5	8	
68	82282	FLAT HEAD SCREW M6X10L	2	
69	BB021	SCRAPER PLATE FOR BB6	1	
70	BB022	SCRAPER RUBBER	1	
71	BS333	BLADE GUID HEAD R	1	
72	BS334	GUIDE PIN	8	
73	84146	BALL BEARING 605ZZ	2	
86	01127	DIE-NUT WASHER	1	
87	81226	WASHER 10	1	
88	80056	HEX SHAFT M10x35	1	
89	70573	GUIDE KNOB SS47 FOR BS185	1	
90	BS338	BLADE GUID F	1	
94	BS339	のこ刃ガイドヘッド F	1	



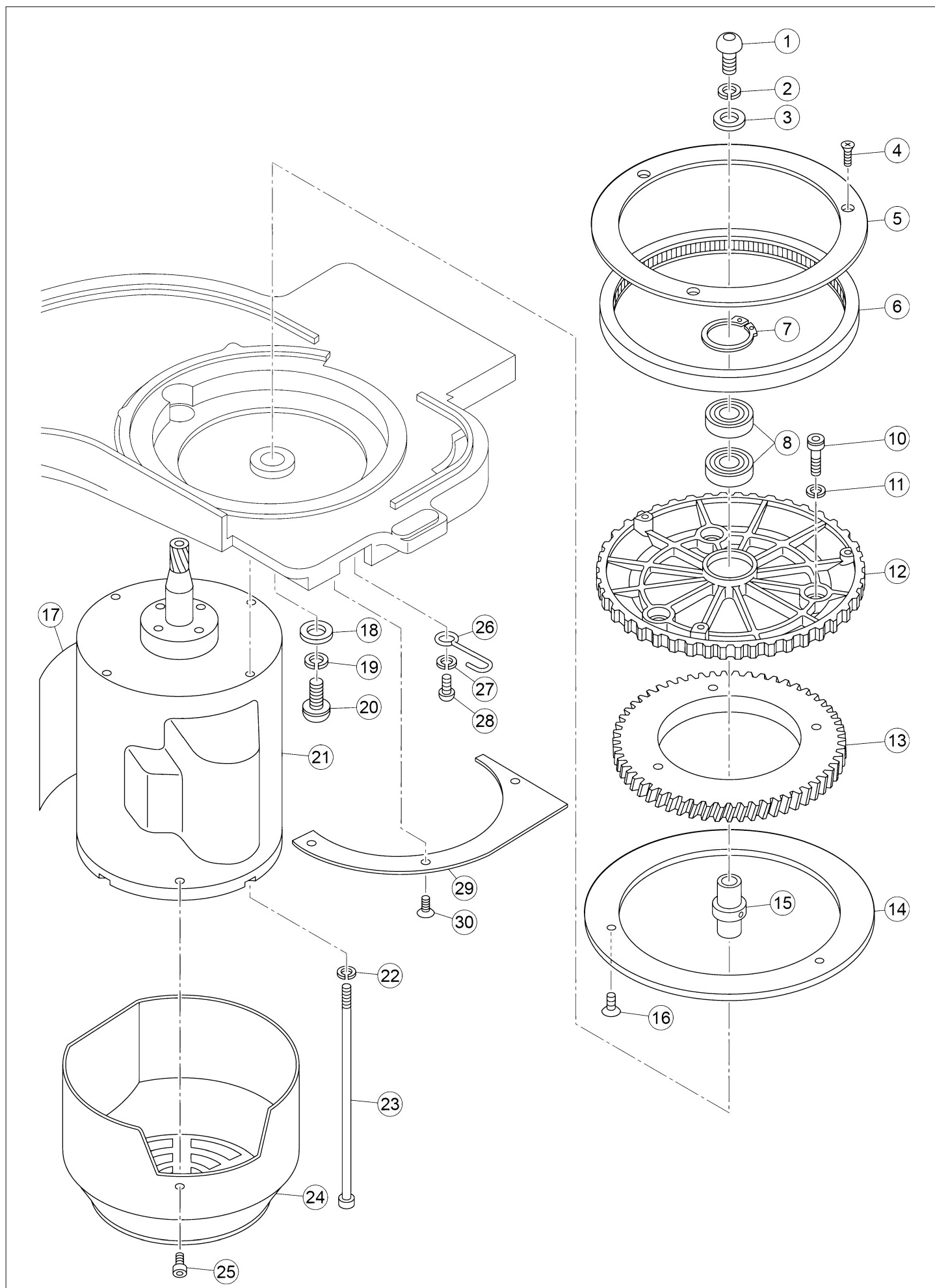
# BAND SAW BAND SAW BEAVER 6, 6F





# BAND SAW BAND SAW BEAVER 6, 6F

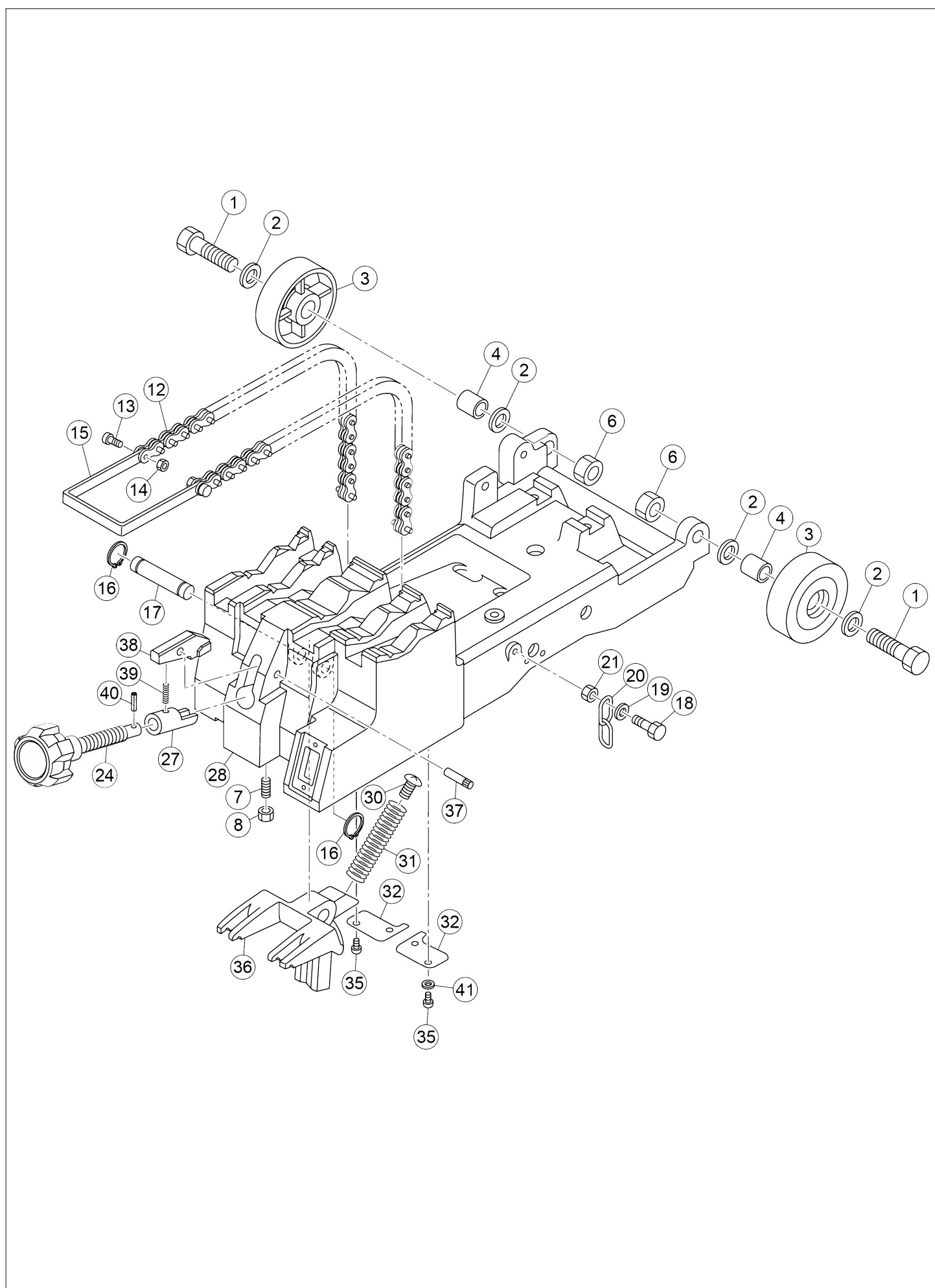
**Asada**  
Driving Device





# BAND SAW BAND SAW BEAVER 6, 6F

**Asada**  
Chain Vise



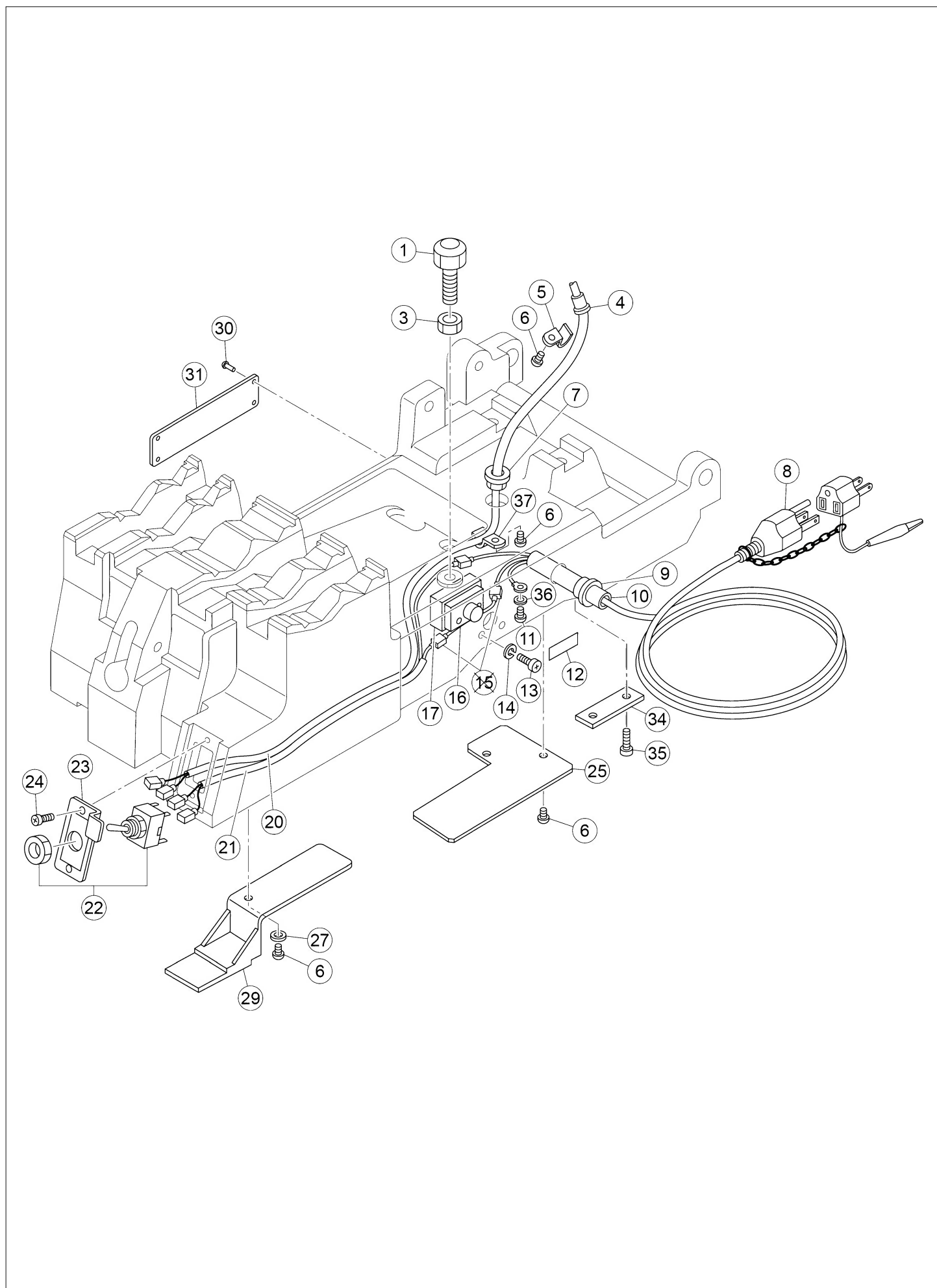


# BAND SAW BAND SAW BEAVER 6, 6F



Ref. No.	Code No.	Parts Name	Qty	Remark
1	80125	HEX BOLT 16x65	2	
2	81275	PLAIN WASHER M16 BLACKENING	4	81153 ⇒ 81275 (2011.1)
3	BS291	CASTER FOR BS185	2	
4	BS292	B185 CASTER COLLAR	2	
6	81087	U-NUT M16	2	
7	80404	STOP BOLT 6x22	1	80416 ⇒ 80404 (2011.12)
8	81062	HEX NUT 6	1	81008 ⇒ 81062 (2009.9)
12	BS303	CHAIN FOR BS185	2	
13	80158	HEX BOLT 5x15	2	
14	81068	U-NUT 5	2	
15	BS261	CHAIN HANDLE	1	
16	83304	SNAP RING C S-15	2	
17	34422	CLAMP ROD FOR BS120/170	1	
18	45473	STOP BOLT	1	
19	81236	WASHER 8	1	
20	70204	CHAIN FOR BS120/170	1	
21	81064	HEX NUT 8	1	81063 ⇒ 81064 (2009.8)
24	BS014	CLAMP KNOB(=BS306)	1	
27※	BB025	BB6 GUIDE BUSH	1	
28	BB024	CHAIN VISE BODY BB6	1	
30	82244	PAN-HEAD SCREW M8x15L	1	82212 ⇒ 82244 (2011.1)
31	BS382	CLAMPER SPRING	1	
32	BS392	CHAIN SUPPORT PLATE	2	
35	82200	PAN-HEAD SCREW 6x10	4	82201 ⇒ 82200 (2011.1) Quantity change 2 ⇒ 4 (2015.9)
36	BS048	CLAMPER	1	
37	45732	PIN	1	
38※	BB070	FEED SCREW GUIDE	1	BS077 ⇒ BB070 (2003.12)
39	BB026	SPRING FOR BAND SAW	1	
40	83020	R-PIN 5x20L	1	
41	81225	WASHER 6	4	Add (2015.9)
SET	BS258	CHAIN COMP. FOR BS185	1	(No. 12-15)

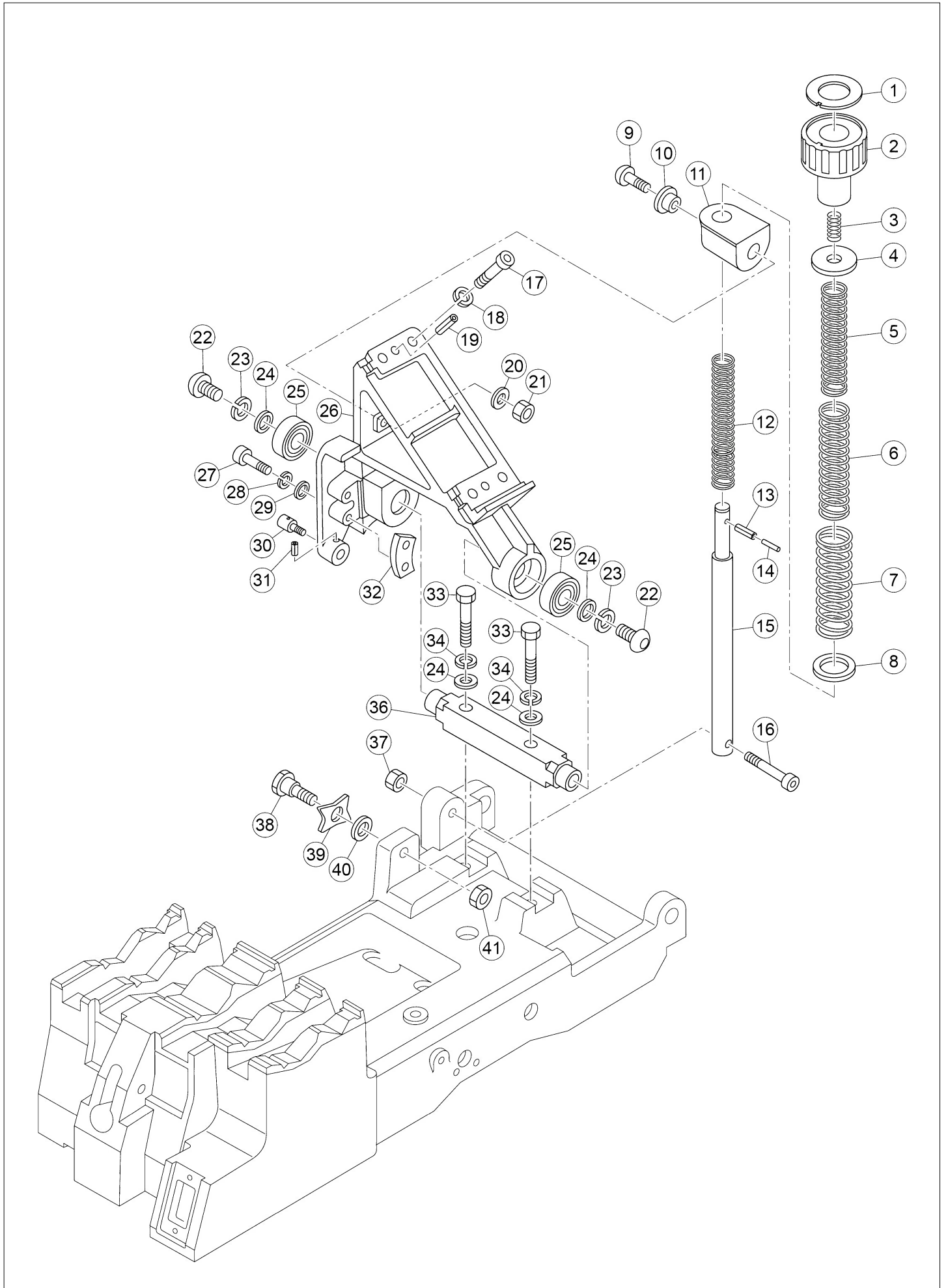
※ The machine which produced before 2013, No. 27 and 38 should be changed at the same time.



# BAND SAW BAND SAW BEAVER 6, 6F

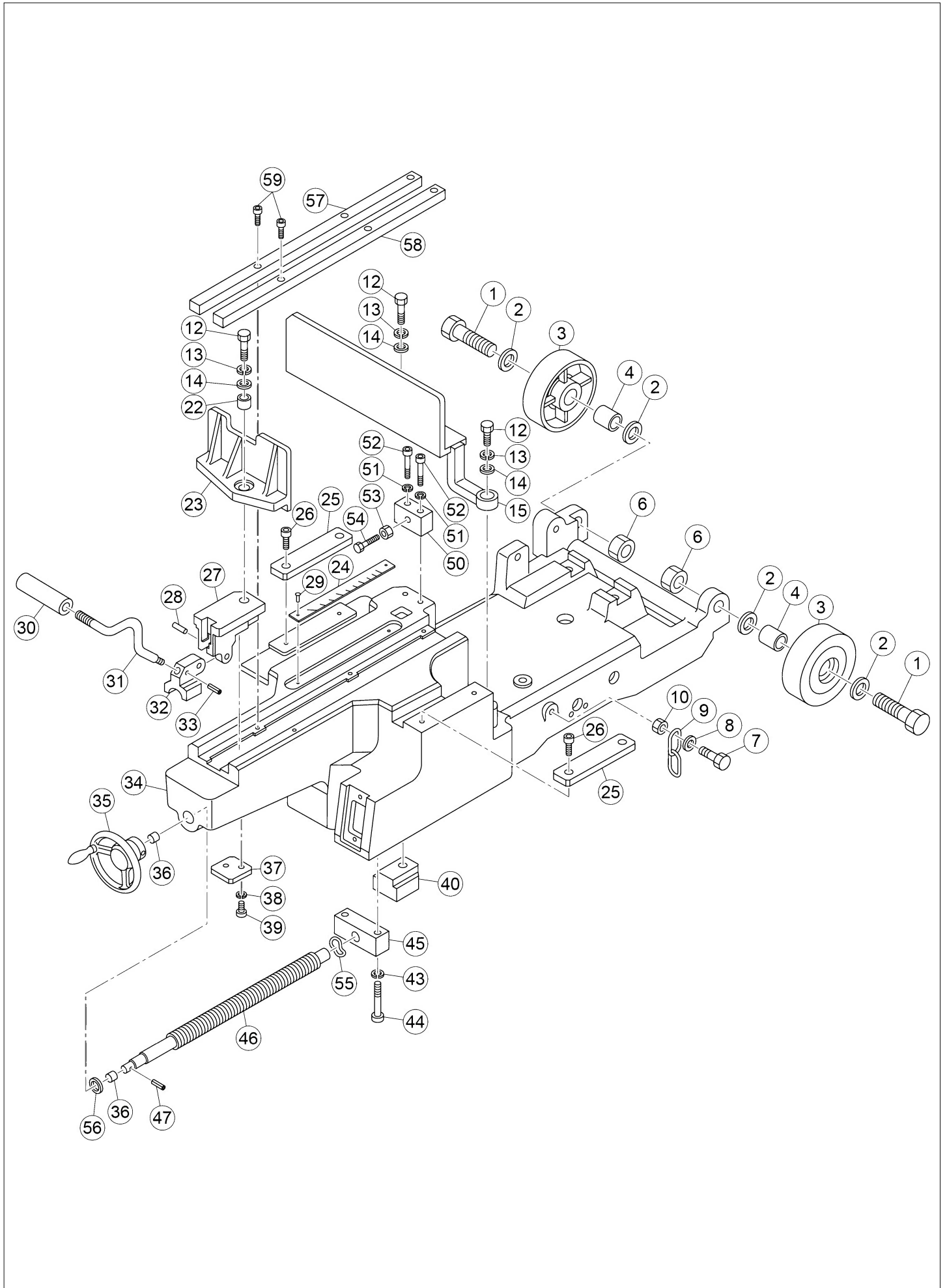
**Asada**  
Switch (Chain Vise)

Ref. No.	Code No.	Parts Name	Qty	Remark
1	BS051	STOPPER RUBBER	1	
2	80055	HEX BOLT 10 x 30	4	Deleted (2010.2)
3	81024	HEX NUT 10	1	
4	BB115	BB6 COIL TUBE	1	
5	19722	TUBE HOOK	1	
6	82200	PAN-HEAD SCREW 6x10	5	82201 ⇒ 82200 (2011.1)
7	70605	ONE-TOUCH BUSH NB-15	1	
8	BS049	B125 POWER CORD	1	BB028 ⇒ BS049 (2009.12)
9	70605	ONE-TOUCH BUSH NB-15	1	
10	85409	PROTECTION TUBE 12x14	1	
11	88899	PAN HEAD SCREW M6x8L BRASS	1	
12	BS341	RESET BUTTON STICKER	1	
13	82177	PAN HEAD SCREW	2	
14	81111	SPRING WASHER M4	2	
15	BS370	BS185 LEAD	2	Deleted (2009.12)
16	87707	PROTECTOR 8A OR-627	1	
17	BS285	PROTECTOR COVER	1	
20	BB120	BB6 MOTOR CORD	1	BB027 ⇒ BB120 (2009)
21	BS059	B125 SWITCH CORD	1	BS368 ⇒ BS059 (2009.12)
22	87178	SNAP SWITCH WD1201F	1	
23	34417	SWITCH PLATE FOR BS120/170	1	BS364 ⇒ 34417 (2010.11)
24	82201	PAN-HEAD SCREW 6x10	2	
25	BS436	PROTECTOR BACK PLATE	1	
27	81225	WASHER 6	1	81115 ⇒ 81225 (2011.6)
29	BS327	B185 SWITCH BACK PLATE	1	
30	83352	PLATE TACK 2x4.8	4	
31	BB029	BB6 MACHINE PLATE 100V	1	
31	BB044	BB6 MACHINE PLATE		
34	BB040	BB6 CORD STOPPER	1	
35	82189	PAN-HEAD SCREW 6x15	2	82213 ⇒ 82189 (2011.1)
36	81246	TOOTHED LOCK WASHER 6	1	
37	19722	TUBE HOOK	1	
SET	BS741	PROTECTOR ASSEMBLY	1	(No. 13, 14, 16, 17) Deleted No. 15 (2009.12)



Ref. No.	Code No.	Parts Name	Qty	Remark
1	BB032	BB6 ADJUSTMENT KNOB STICKER	1	
2	BS322	CUTTING LOAD ADJUST KNOB	1	
3	BS287	ADJUSTMENT KNOB SET SPRING BS185	1	
4	BB068	BB6 SPRING STOPPER H	1	
5	BB034	INNER SPRING BS185/BB6	1	
6	BB035	MIDDLE SPRING BS185/BB6	1	
7	BB033	OUTER SPRING BS185/BB6	1	
8	BB041	BB6 LOAD ADJUSTMENT SP	1	
9	82317	HEX SOCKET BUTTON BOLT M10x35L	1	
10	BB039	BRACKET COLLAR	1	
11	BB011	SLIDE ROD BRACKET BB6	1	
12	BS089	USSING SPRING	1	
13	83035	R-PIN 6 x 18	1	
14	83067	R-PIN 3.5 x 12	1	
15	BS286	B185 SLIDE ROD	1	
16	80183	Hex Bolt M8x50L	1	80182 ⇒ 80183 (2009.8)
17	80178	STOP BOLT M8x25L	4	
18	81254	SPRING WASHER CM8	4	81249 ⇒ 81254 (2009.8)
19	83082	R-PIN 5x35L	2	
20	81269	SMALL PLAIN WASHER M10 BLACKENING	1	70150 ⇒ 81269 (2009.8)
21	81024	HEX NUT 10	1	
22	82257	SCREW 10x20	2	
23	81115	SPRING WASHER M10	2	
24	81226	WASHER 10	4	81149 ⇒ 81226 (2009.9)
25	84136	BALL BEARING 6003ZZ	2	
26	BB009	SHAFT SUPPORT BB6	1	
27	80169	STOP BOLT M6x35	2	
28	81113	SPRING WASHER	2	
29	81225	WASHER 6	2	
30	BB010	BB6 STOPPER PIN	1	
31	83015	R-PIN 4x12	1	
32	BS309	CURB PLATE	1	
33	80058	HEX BOLT 10x45	2	80060 ⇒ 80058 (2009.12)
34	81115	SPRING WASHER M10	2	
36	BB012	PUMP UNIT KIT EP40 · 110V	1	
37	81064	HEX NUT 8	1	
38	BS056	STOPPER BOLT	1	
39	BS055	B125 STOPPER	1	
40	BS057	STOPPER COLOR	1	
41	81041	U-NUT 10	1	
SET	BB030	BB6 ADJUSTMENT ASSEMBLY	1	(No. 1-8, 12-16, 37)
SET	BS016	STOPPER ASSEMBLY	1	(No. 38-41)

# BAND SAW BAND SAW BEAVER 6, 6F



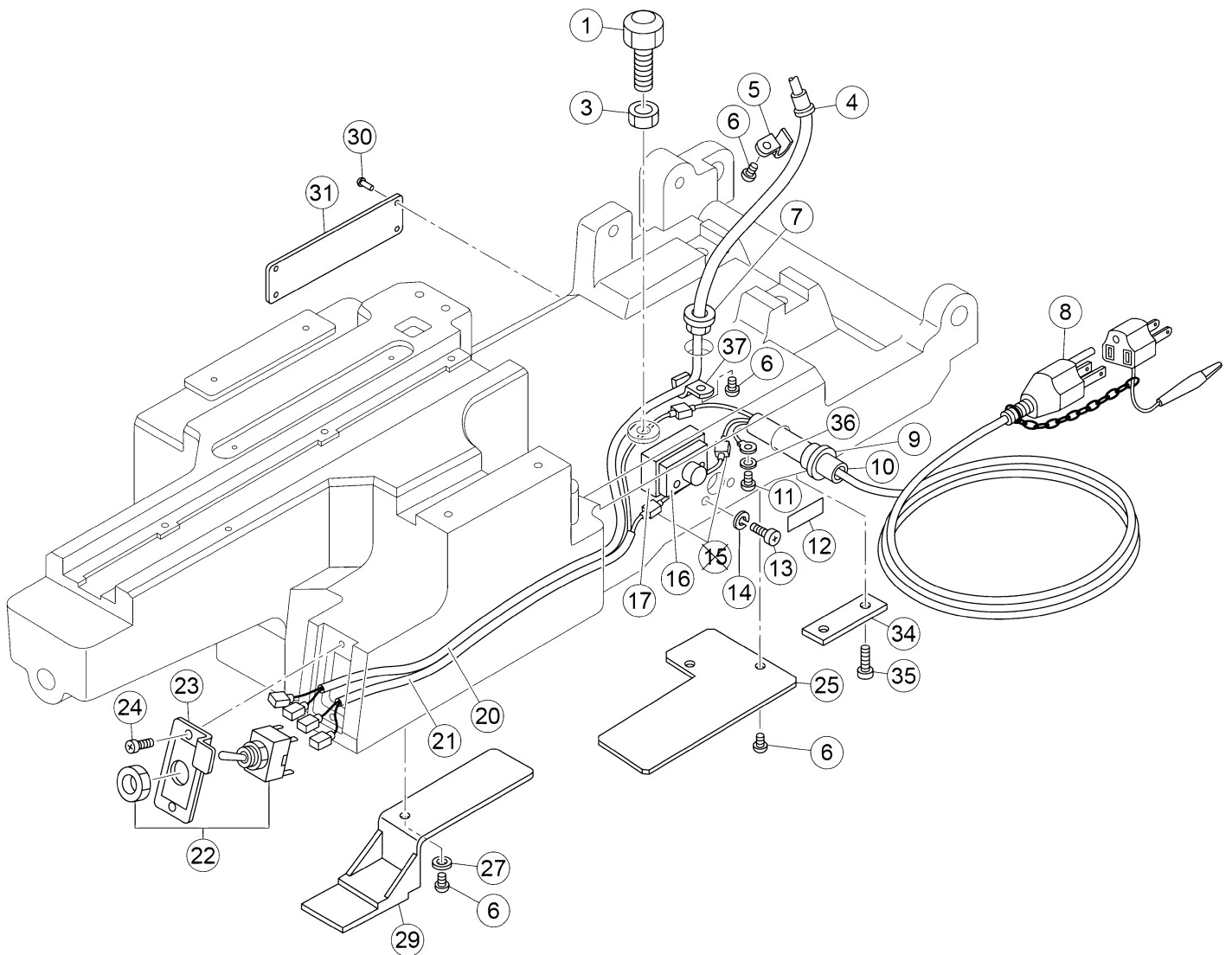
# BAND SAW

## BAND SAW BEAVER 6, 6F

Ref. No.	Code No.	Parts Name	Qty	Remark
1	80125	HEX BOLT 16x65	2	
2	81275	PLAIN WASHER M16 BLACKENING	4	81153 ⇒ 81275 (2011.1)
3	BS291	CASTER FOR BS185	2	
4	BS292	B185 CASTER COLLAR	2	
6	81087	U-NUT M16	2	
7	45473	STOP BOLT	1	
8	81236	WASHER 8	1	
9	70204	CHAIN FOR BS120/170	1	
10	81064	HEX NUT 8	1	81063 ⇒ 81064 (2009.8)
12	80056	HEX SHAFT M10x35	3	80057 ⇒ 80056 (2009.8)
13	81115	SPRING WASHER M10	3	
14	81226	WASHER 10	3	81149 ⇒ 81226 (2009.9)
15	BB102	BB6F MOUTH PIECE R	1	
22	45442	COLLAR	1	
23	BS361	B185 FLAT VISE	1	
24	BS441	B185 SCALE PLATE	1	
25	BS337	B18F VISE PLATE	2	
26	80164	HEX BOLT 6 x 8	4	80161 ⇒ 80164 (2009.8)
27	BS362	B18F SLIDER	1	
28	45470	PIN BS22F	1	
29	83355	PLATE TACK 4x4.8L	3	
30	70574	BAR GRIP KDC-10 BLACK	1	
31	BS343	GUIDE ROD	1	
32	45444	FEED SCREW GUIDE	1	
33	83067	R-PIN 3.5 x 12	1	
34	BB101	BB6F FLAT VISE BODY	1	※Supplied only as a set #BB146.
35	45450	CLAMP HANDLE FOR BS170A	1	
36	84376	BUSH 70B-1525	2	84326 ⇒ 84376 (2010.2)
37	BS320	B18F SUPPORT BLOCK	1	
38	81251	SPRING WASHER CM6	2	70152 ⇒ 81251 (2009.8)
39	80166	STOP BOLT 6x20 (80116)	2	80165 ⇒ 80166 (2009.8)
40	BB104	BB6F CONTROL PLATE	1	
43	81113	SPRING WASHER	2	
44	80170	HEX SOCKET BOLT M6x40L	2	
45	BS346	B18F SCREW SUPPORT	1	
46	BS344	BS/8F FEED SCREW	1	
47	83039	PIN 6x25	1	
50	BS873	STOPPER B32F	1	
51	80168	HEX SOCKET BOLT M6 x 30	2	
52	81113	SPRING WASHER	2	
53	81062	HEX NUT 6	1	81066 ⇒ 81062 (2009.9)
54	80019	HEX BOLT M6x25L	1	
55	81137	CORRUGATED WASHER	1	
56	81170	THRUST WASHER AS1528	1	
57	BS437	B18F GUIDE RAIL A	1	
58	BS438	B18F GUIDE RAIL B	1	
59	80164	HEX BOLT 6 x 16	6	80161 ⇒ 80164 (2009.8)
SET	BB146	BB6F Flat Vise Body for Repair	1	(No. 24, 29, 34) ※Including #70601 (Helical Insert) x1

# BAND SAW BAND SAW BEAVER 6, 6F

**Asada**  
Switch (Flat Vise)



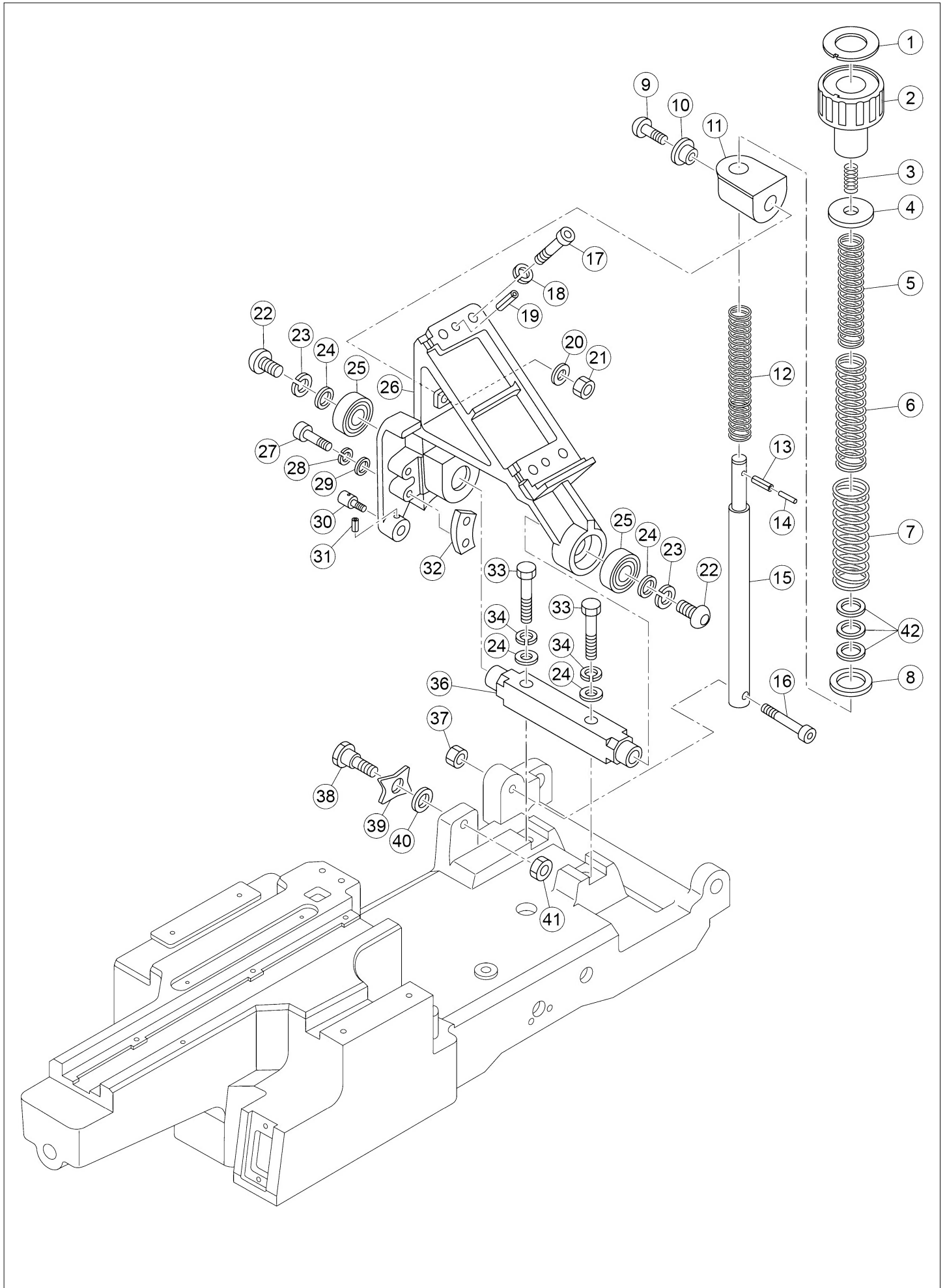


# BAND SAW

## BAND SAW BEAVER 6, 6F



Ref. No.	Code No.	Parts Name	Qty	Remark
1	BS051	STOPPER RUBBER	1	
2	80055	HEX BOLT 10 x 30	4	Deleted (2010.2)
3	81024	HEX NUT 10	1	
4	BB115	BB6 COIL TUBE	1	
5	19722	TUBE HOOK	1	
6	82200	PAN-HEAD SCREW 6x10	5	82201 ⇒ 82200 (2011.1)
7	70605	ONE-TOUCH BUSH NB-15	1	
8	BS049	B125 POWER CORD	1	BB028 ⇒ BS049 (2009.12)
9	70605	ONE-TOUCH BUSH NB-15	1	
10	85409	PROTECTION TUBE 12x14	1	
11	88899	PAN HEAD SCREW M6x8L BRASS	1	
12	BS341	RESET BUTTON STICKER	1	
13	82177	PAN HEAD SCREW	2	
14	81111	SPRING WASHER M4	2	
15	BS370	BS185 LEAD	2	Deleted (2009.12)
16	87707	PROTECTOR 8A OR-627	1	
17	BS285	PROTECTOR COVER	1	
20	BB120	BB6 MOTOR CORD	1	BB027 ⇒ BB120 (2009)
21	BS059	B125 SWITCH CORD	1	BS368 ⇒ BS059 (2009.12)
22	87178	SNAP SWITCH WD1201F	1	
23	34417	SWITCH PLATE FOR BS120/170	1	BS364 ⇒ 34417 (2010.11)
24	82201	PAN-HEAD SCREW 6x10	2	
25	BS436	PROTECTOR BACK PLATE	1	
27	81225	WASHER 6	1	81115 ⇒ 81225 (2011.6)
29	BS327	B185 SWITCH BACK PLATE	1	
30	83352	PLATE TACK 2x4.8	4	
31	BB107	BB6F MACHINE PLATE 100V	1	
31	BB108	BB6F MACHINE PLATE ENGLISH		
34	BB040	BB6 CORD STOPPER	1	
35	82189	PAN-HEAD SCREW 6x15	2	82213 ⇒ 82189 (2011.1)
36	81246	TOOTHED LOCK WASHER 6	1	
37	19722	TUBE HOOK	1	
SET	BS260	SWITCH COMP. FOR BS185	1	(No. 22~24)
SET	BS741	PROTECTOR ASSEMBLY	1	(No. 13, 14, 16, 17) Deleted No. 15 (2009.12)



# BAND SAW BAND SAW BEAVER 6, 6F



## Adjustment system (Flat Vise)

Ref. No.	Code No.	Parts Name	Qty	Remark
1	BB032	BB6 ADJUSTMENT KNOB STICKER	1	
2	BS322	CUTTING LOAD ADJUST KNOB	1	
3	BS287	ADJUSTMENT KNOB SET SPRING BS185	1	
4	BB068	BB6 SPRING STOPPER H	1	
5	BB034	INNER SPRING BS185/BB6	1	
6	BB035	MIDDLE SPRING BS185/BB6	1	
7	BB033	OUTER SPRING BS185/BB6	1	
8	BB041	BB6 LOAD ADJUSTMENT SP	1	
9	82317	HEX SOCKET BUTTON BOLT M10x35L	1	
10	BB039	BRACKET COLLAR	1	
11	BB011	SLIDE ROD BRACKET BB6	1	
12	BS089	USSING SPRING	1	
13	83035	R-PIN 6 x 18	1	
14	83067	R-PIN 3.5 x 12	1	
15	BS286	B185 SLIDE ROD	1	
16	80183	Hex Bolt M8x50L	1	80182 ⇒ 80183 (2009.8)
17	80178	STOP BOLT M8x25L	4	
18	81254	SPRING WASHER CM8	4	81249 ⇒ 81254 (2009.8)
19	83082	R-PIN 5x35L	2	
20	81269	SMALL PLAIN WASHER M10 BLACKENING	1	70150 ⇒ 81269 (2009.8)
21	81024	HEX NUT 10	1	
22	82257	SCREW 10x20	2	
23	81115	SPRING WASHER M10	2	
24	81226	WASHER 10	4	81149 ⇒ 81226 (2009.9)
25	84136	BALL BEARING 6003ZZ	2	
26	BB009	SHAFT SUPPORT BB6	1	
27	80169	STOP BOLT M6x35	2	
28	81113	SPRING WASHER	2	
29	81225	WASHER 6	2	
30	BB010	BB6 STOPPER PIN	1	
31	83015	R-PIN 4x12	1	
32	BS309	CURB PLATE	1	
33	80058	HEX BOLT 10x45	2	80060 ⇒ 80058 (2009.12)
34	81115	SPRING WASHER M10	2	
36	BB012	PUMP UNIT KIT EP40 · 110V	1	
37	81064	HEX NUT 8	1	
38	BS056	STOPPER BOLT	1	
39	BS055	B125 STOPPER	1	
40	BS057	STOPPER COLOR	1	
41	81041	U-NUT 10	1	
42	81153	WASHER 16	3	
SET	BB069	BB6F ADJUSTMENT ASSEMBLY	1	(No. 1~8, 12~16, 37, 42)
SET	BS016	STOPPER ASSEMBLY	1	(No. 38-41)