

# BAND SAW BAND SAW 32F



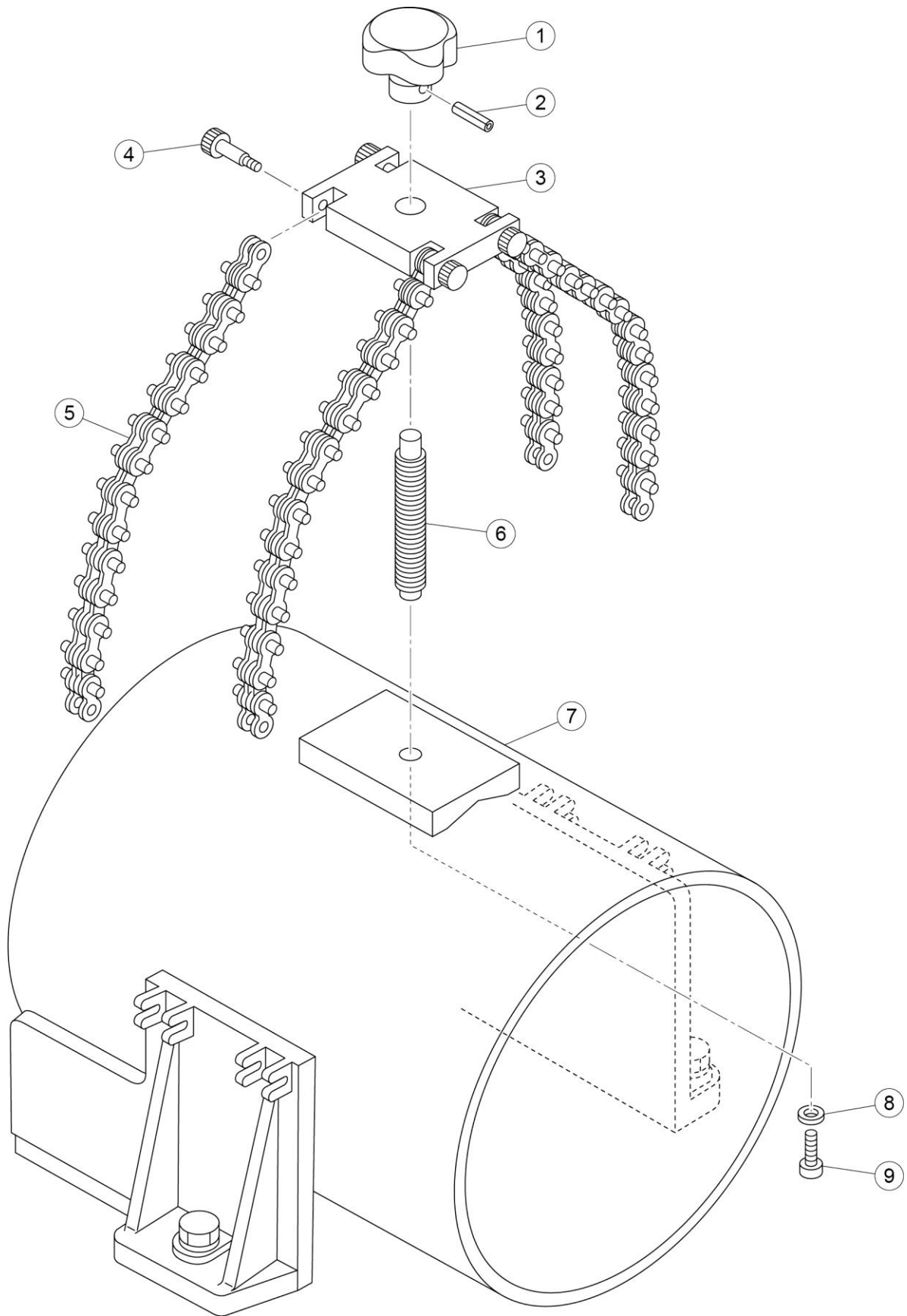
## ADJUSTMENT & SHAFT SUPPORT

Ref. No.	Code No.	Parts Name	Qty	Remark
1	BS977	B32F SPEED CONTROLLER	1	85669 ⇒ BS967※(2012)⇒BS977※※(2017.4)
2	85002	M-CONNECTOR 1/4x1/4	2	
3	BS903	B32F LIMIT SWITCH CORD	1	
4	70328	CORD CONNECTOR OAW1609	1	
5	87172	LIMIT SWITCH	1	
6	BS904	BS32F SWITCH PLATE	1	
7	81042	U-NUT M6	2	
8	BS895	B32F CYLINDER PIN	1	
9	70544	B32F SPHERICAL JOINT	1	
10	83374	SNAP PIN 12	2	
11	81011	HEX NUT 12-3	1	
12	BS928	HYDRAULIC CYLINDER	1	
13	85030	MALE ELBOW FITTING LIN 1/4 × PT 1/4	3	
14	85402	TUBE 440 (300mm)	1	1 pce = 1m
15	85402-2	TUBE 440 (1900mm)	1	1 pce = 2m (2018.8)
16	85001	M-CONNECTOR 1/4x1/8	1	
17	85049	T FITTING 1/4	2	
18	85013	NIPPLE 1/4 × 1/4	54	Quantity change (2012.10)
19	85667	CHECK VALVE CV102	1	
20	BS896	B32F CYLINDER PIN B	1	
21	85668	BREATHER CAP BM3/8"	1	
22	BS897	B32F TANK	1	
23	85666	OIL GAUGE	1	
24	85402-2	TUBE 440 (1400mm)	1	1 pce = 2m (2018.8)
25	85670	BALL VALVE TK1/4	1	
26	85023	M-ELBOW 1/4x1/4	1	
27	BS851	BS32F ARM	1	
28	81116	SPRING WASHER M12	3	
29	80209	STOP BOLT 12x30	3	
30	80177	STOP BOLT 8x20	2	
31	81114	SPRING WASHER 8	2	
32	BS938	BS32F LOAD ARM	1	
33	81080	HEX CAP NUT 16	1	
34	81153	WASHER 16	2	
35	BS858	B32F LOAD SPRING	1	
36	81153	WASHER 16	1	
37	81153	WASHER 16	2	
38	84145	BALL BEARING 6203ZZ	2	
39	BS857	BS32F LOAD SHAFT	1	
40	80172	STOP BOLT 6x50	1	
41	81042	U-NUT M6	1	
42	BS849	BS32F SHAFT SUPPORT COLLAR	1	
43	80197	STOP BOLT M12 × 55L	2	
44	81116	SPRING WASHER M12	2	
45	81164	WASHER 12	2	
46	BS854	BS32F ADJUSTING SCREW	2	
47	BS852	BS32F ADJUSTING STANDARD SHAFT	1	
48	BS855	BS32F ADJUSTING BUSH	2	
49	BS853	BS32F ADJUSTING SHAFT PLATE	1	
50	81153	WASHER 16	2	
51	84145	BALL BEARING 6203ZZ	2	
52	BS849	BS32F SHAFT SUPPORT COLLAR	1	
53	BS848	BS32F SHAFT SUPPORT	1	
54	81080	HEX CAP NUT 16	1	
55	81116	SPRING WASHER M12	2	
56	80209	STOP BOLT 12x30	2	



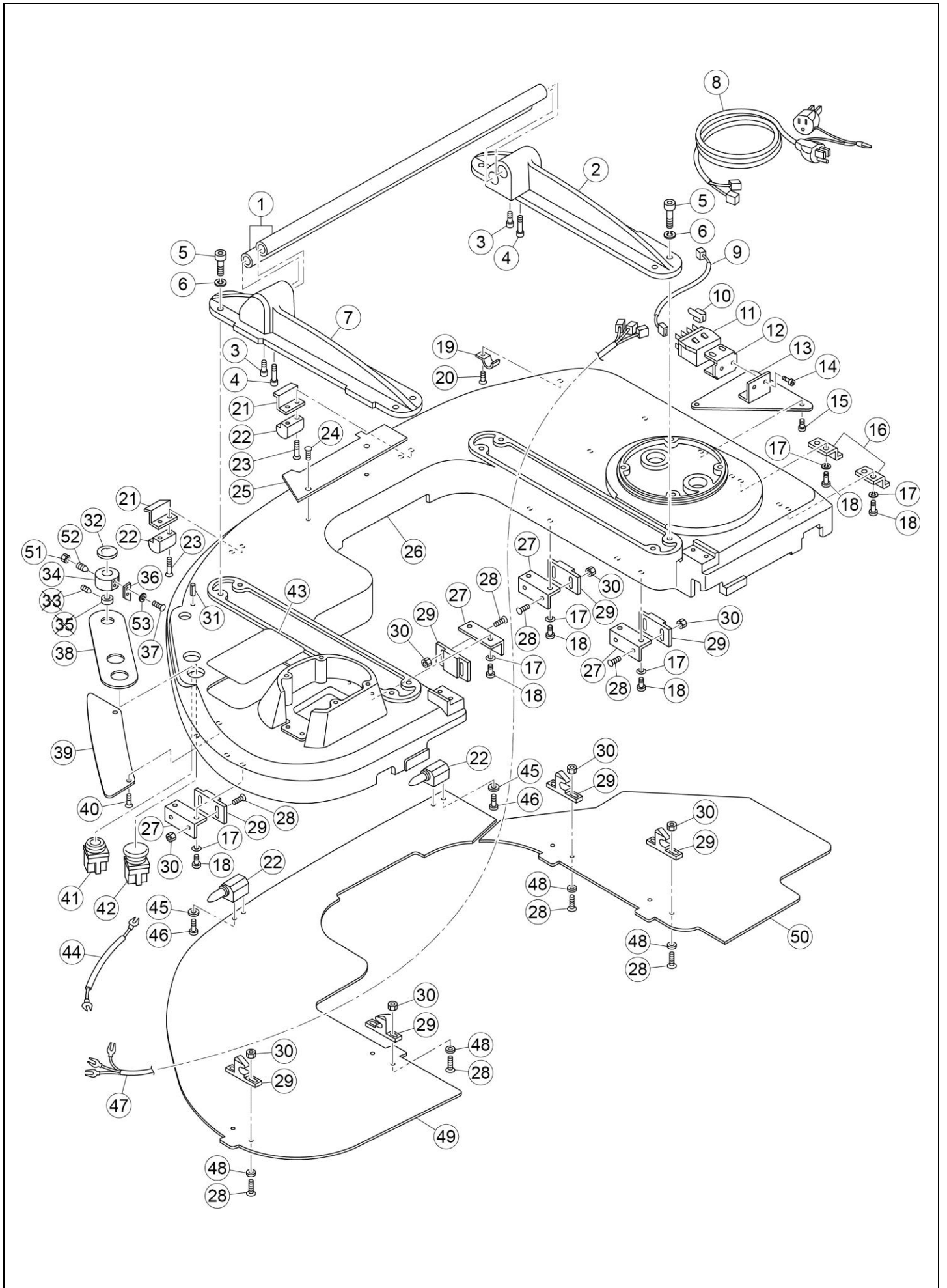
# BAND SAW BAND SAW 32F

 **Asada**  
**CHAIN CLAMP**





# BAND SAW BAND SAW 32F



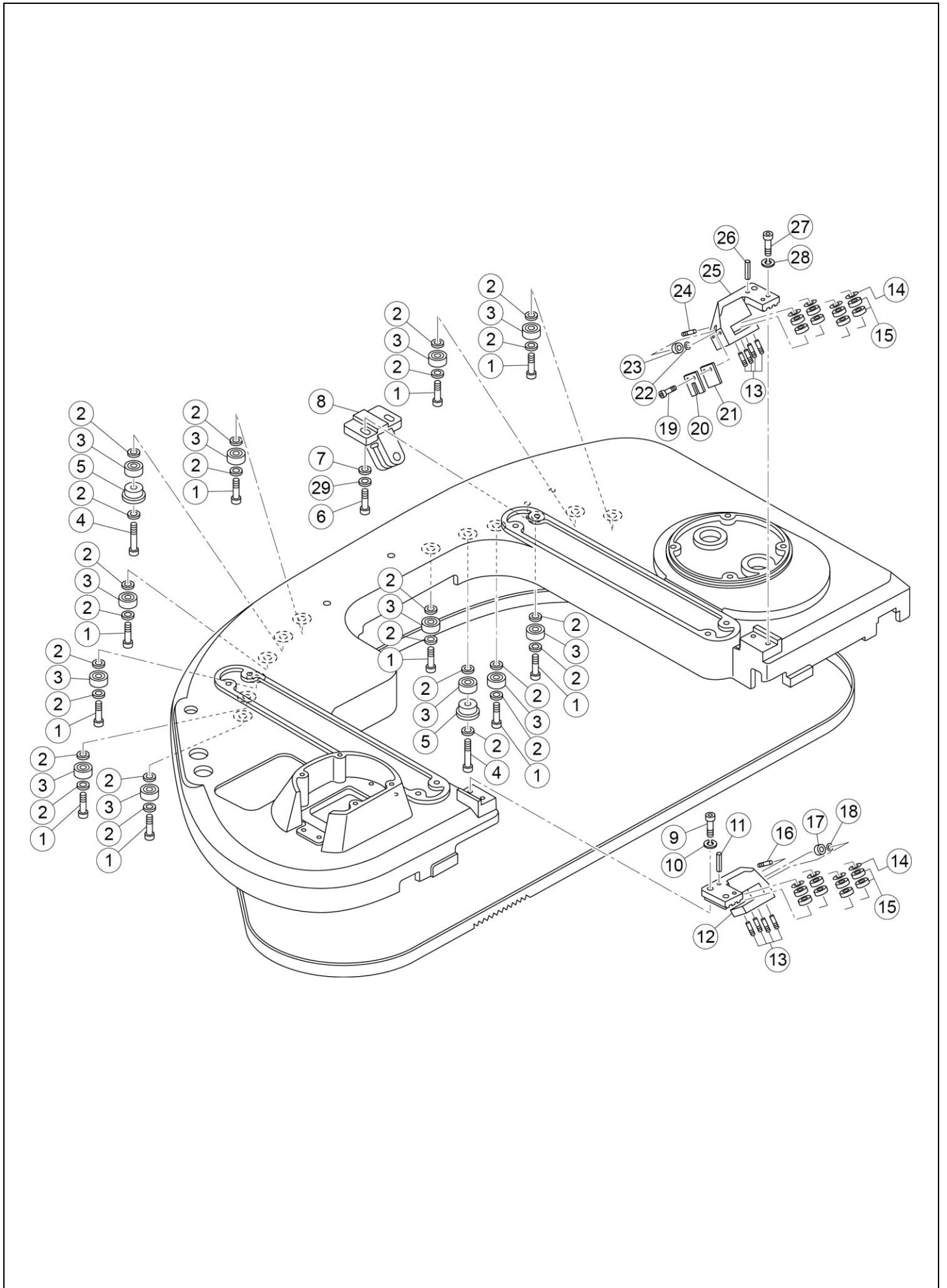
# BAND SAW BAND SAW 32F

Ref. No.	Code No.	Parts Name	Qty	Remark
1	BS829	B32F GUIDE BAR	2	
2	BS828	BS32F FRAME GUIDE R	1	
3	80163	STOP BOLT 6x15	2	
4	80170	CIRCLIP 3SG/4SB	2	
5	80189	STOP BOLT M10x25L	8	
6	81115	SPRING WASHER M10	8	
7	BS827	BS32F FRAME GUIDE F	1	
8	BS909	B32F POWER CODE	1	
9	BS913	B32F LEAD WIRE	1	
10	87147	BRABCHING TERMINAL	2	
11	87726	RELAY G7J-4A-T AC100/120V	1	
12	87727	MOUNTING BRACKET	1	
13	BS836	B32F CONTROL PLATE	1	
14	82194	PAN HEAD SCREW M4x10L	2	
15	82201	PAN-HEAD SCREW 6x10	3	
16	BS835	BS32F BACK PLATE STOPPER	2	
17	81113	SPRING WASHER	12	
18	80161	STOP BOLT	12	
19	19722	TUBE HOOK	1	
20	82207	PAN-HEAD SCREW M6x8	1	
21	BS833	B32F CODE STOPPER	2	
22	BS925	B32F HINGE	2	
23	82283	FLAT HEAD SCREW M6 X 25L	47	
24	82949	TAPPING SCREW 2 x 5	2	
25	BS933	ASADA PLATE	1	
26	BS930	B32F FRAME	1	
27	BS834	B32F CATCH PLATE	4	
28	82210	PAN-HEAD SCREW M3x12	16	
29	70643	BRABBER DOOR CATH C3805	4	70541 ⇒ 70643 (1998) Not compatible
30	81084	U NUT M3	16	
31	83009	R-PIN 4x10L	1	
32	BS915	B32F KNOB LABEL	1	
33	80354	STOP BOLT 4 x 4	4	Delete (2012.1)
34	BS974	B32F CUTTING SPEED ADJUSTING KNOB	1	BS899 ⇒ BS955 (2012.1) ⇒ BS969 (2012.9) ⇒ BS974 (2017.4)
35	BS898	B32F SPEED CONTROL KNOB	4	BS898 ⇒ BS954 (2012.1) ⇒ Delete (2012.9)
36	BS956	B32F ARROW	1	BS900 ⇒ BS956 (2012.1)
37	82219	PAN-HEAD SCREW 4 x 6	2	
38	BS966	B32F CONTROL LABEL	1	BS931 ⇒ BS958 (2012.1) ⇒ BS966 (2012.9)
39	BS837	B32F SWITCH BACK PLATE	1	
40	82282	FLAT HEAD SCREW M6X10L	32	Quantity change (1996)
41	87170	ON SWITCH ABN110	1	
42	87171	OFF SWITCH ABN301	1	
43	BS935	BS32F LOAD ADJUSTING LABEL	1	
44	BS914	B32F SWITCH LEAD WIRE	1	
45	81159	WASHER 5	4	
46	80201	STOP BOLT M5x10	4	
47	BS901	B32F SWITCH CORD	1	
48	81158	WASHER 3	8	
49	BS831	B32F BACK PLATE A	1	
50	BS832	B32F BACK PLATE B	1	



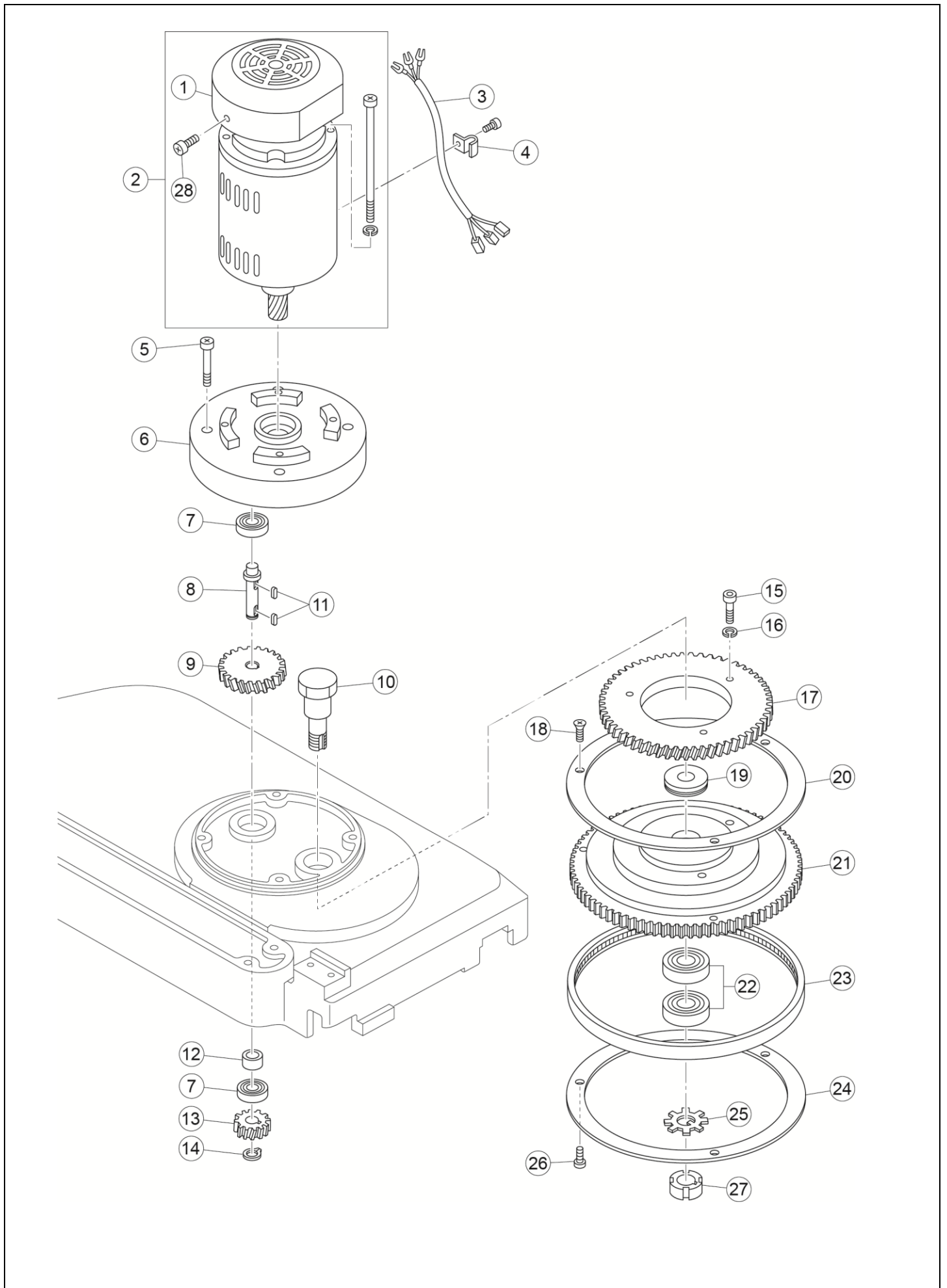


# BAND SAW BAND SAW 32F





# BAND SAW BAND SAW 32F



# BAND SAW BAND SAW 32F



Ref. No.	Code No.	Parts Name	Qty	Remark
1	70509	MOTOR COVER	1	
2	BS907	MOTOR 100V	1	(Including NO.1 & 27)
2	BS949	MOTOR 110V	1	
2	BS940	MOTOR 220V	1	
3	BS939	B32F MOTOR CODE	1	
4	34145	HOOK FOR BS120/170	1	
5	80170	CIRCLIP 3SG/4SB	4	
6	BS844	B32F HOUSING	1	
7	84116	BALL BEARING 6201ZZ	2	
8	BS981	B32F FIRST SHAFT BODY	1	
9	BS979	B32F FIRST SHAFT	1	
10	BS842	BS32F DRIVE SHAFT	1	
11	57129	KEY 5x5x12.5	2	
12	BS846	BS32F FIRST SHAFT COLLAR	1	
13	BS847	BS32F FIRST SHAFT PINION	1	
14	83321	SNAP RING C S-12	1	
15	80017	HEX BOLT	3	
16	81113	SPRING WASHER	3	
17	BS843	DRIVING GEAR FOR 32F	1	
18	82273	CAP SCREW 5x10	3	
19	84137	THRUST BEARING 51106	1	
20	BS840	B32F SAW BLADE SUPPORT FOR PULLEY	1	
21	BS839	B32F DRIVE PULLEY	1	
22	84431	BEARING 6204-2RS	2	
23	70542	TOOTHED BELT 300Lx80T	1	
24	BS841	B32FBELT SUPPORT	1	
25	84282	WASHER FOR BEARING	1	
26	80201	STOP BOLT M5x10	3	
27	84272	NUT FOR BEARING	1	
28	82175	CAP SCREW 4x8	1	

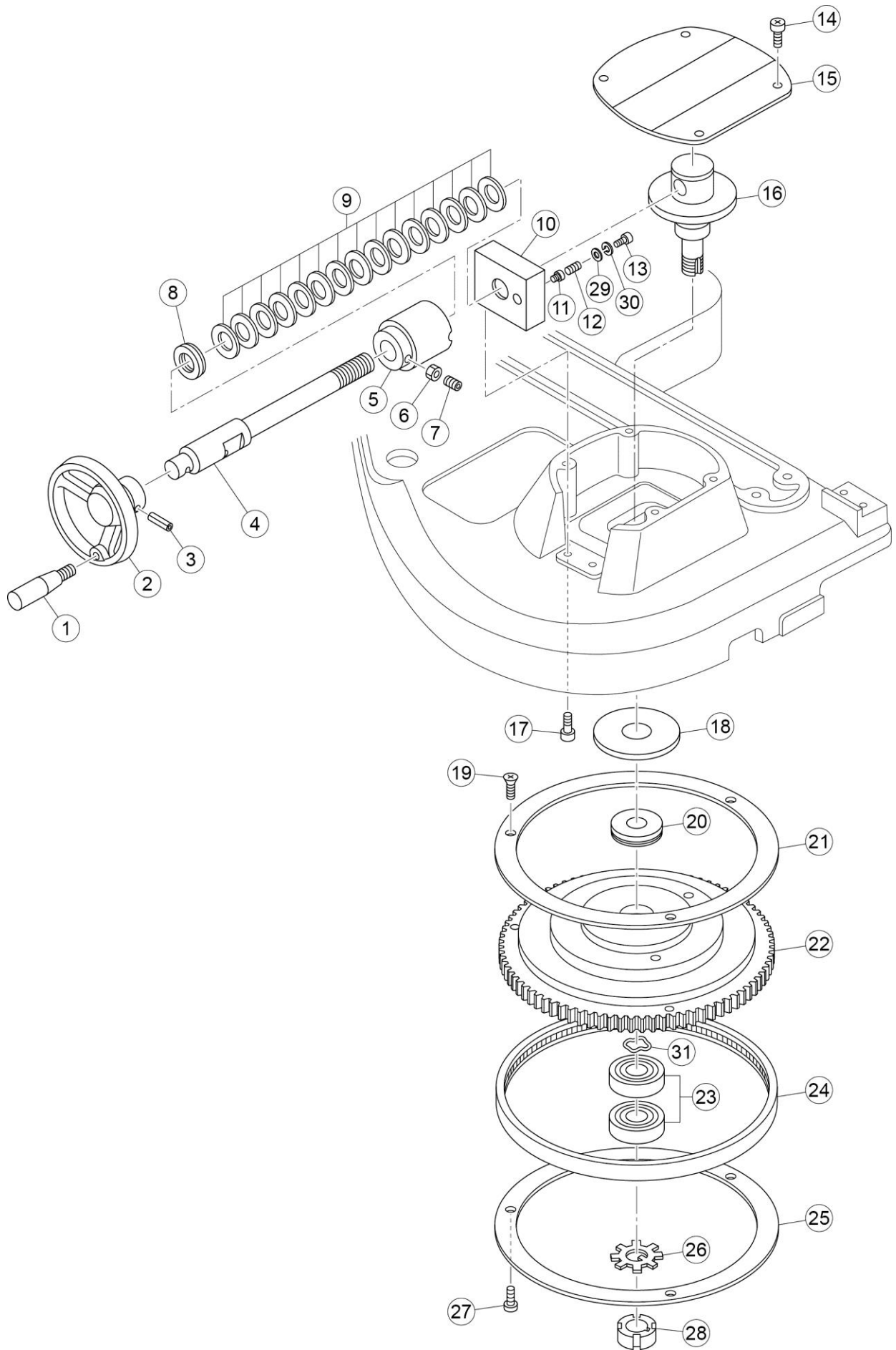
**BAND SAW**  
**BAND SAW 32F**



Ref. No.	Code No.	Parts Name	Qty	Remark

更新日 2017/03/10

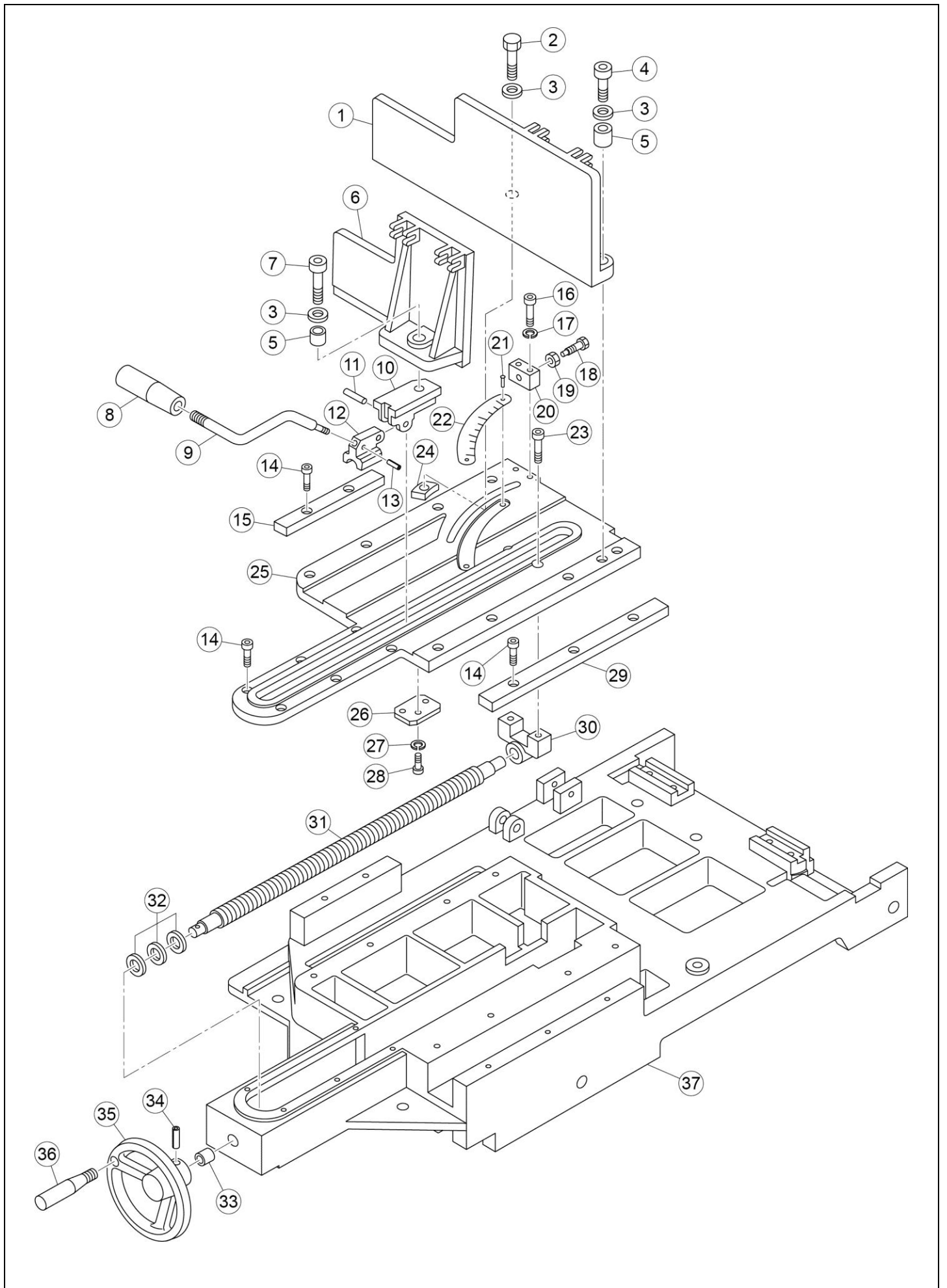
# BAND SAW BAND SAW 32F



**BAND SAW  
BAND SAW 32F**

Ref. No.	Code No.	Parts Name	Qty	Remark
1	70543	ROTATION GRIP	1	
2	BS865	B32F TENSION HANDLE	1	
3	83042	R-PIN 6x30	1	
4	BS863	B32F FEEDING SCREW	1	
5	BS864	B32F FEEDING SCREW COVER	1	
6	81042	U-NUT M6	1	
7	80365	HEX SCREW M6x20L	1	80362 ⇒ 80365 (1989)
8	84152	THRUST BEARING 51103	1	
9	81247	FLAT HEAD WASHER 16H	4615	Quantity change (1990)
10	BS862	B32F FEEDING SCREW GUIDE	1	
11	34305	STOPPER PIN FOR BS120/170	1	
12	34306	SPRING	1	
13	80602	STOP BOLT 10 x 12	1	80377 ⇒ 80602 (2013.12)
14	82200	PAN-HEAD SCREW 6x10	4	
15	BS934	B32 MACHINE PLATE	1	
16	BS860	B32F DRIVEN SHAFT	1	
17	80166	STOP BOLT 6x20 (80116)	2	
18	BS861	B32F DRIVEN COLLAR (2PCS)	1	
19	82273	CAP SCREW 5x10	3	
20	84137	THRUST BEARING 51106	1	
21	BS840	B32F SAW BLADE SUPPORT FOR PULLEY	1	
22	BS859	B32F DRIVEN PULLEY	1	
23	84431	BEARING 6204-2R	2	84169 ⇒ 84431 (2003.11)
24	70542	TOOTHED BELT 300Lx80T	1	
25	BS841	B32F BELT SUPPORT	1	
26	84282	WASHER FOR BEARING	1	
27	80201	STOP BOLT M5x10	3	
28	84272	NUT FOR BEARING	1	
29	81149	WASHER 10	1	
30	81115	SPRING WASHER M10	1	
31	81266	WAVE WASHER	1	
SET	BS808	B32F DRIVEN PULLEY SET	1	(NO. 16, 18-28, 31)
SET	BS809	B32F TENSION SET	1	(NO.1-13, 17, 29, 30)

# BAND SAW BAND SAW 32F





**BAND SAW**  
**BAND SAW 32F**



Ref. No.	Code No.	Parts Name	Qty	Remark
1	BS870	B32F MOUTHPIECE R	1	
2	80109	STOP BOLT M12 × 35L SUS	1	
3	81164	WASHER 12	3	
4	80612	STOP BOLT M12 × 25L	1	
5	BS871	B32F MOUTHPIECE COLLAR	2	
6	BS874	B32F SUPPORT PLATE F	1	
7	80209	STOP BOLT 12x30	1	
8	70558	GRIP GTF-28 × M12	1	
9	BS595	CLAMP ROD BS22F	1	
10	BS875	B32F SLIDER	1	
11	45470	PIN BS22F	1	
12	BS876	B32F FEED SCREW GUIDE	1	
13	83067	R-PIN 3.5 x 12	1	
14	80163	STOP BOLT 6x15	19	
15	BS868	B32F VISE PLATE A	1	
16	80168	HEX SOCKET BOLT M6 x 30	2	
17	81113	SPRING WASHER	2	
18	80020	HEX BOLT M6x30L	1	
19	81008	HEX NUT	1	
20	BS873	STOPPER B32F	1	
21	83355	PLATE TACK No4x4.8L	2	
22	BS937	B32F SCALE PLATE	1	
23	80163	STOP BOLT 6x15	2	
24	BS872	B32F MOUTHPIECE NUT	1	
25	BS867	B32F FLAT VISE	1	
26	BS596	SLIDER SUPPORT	1	
27	81113	SPRING WASHER	3	
28	80166	STOP BOLT 6x20 (80116)	3	
29	BS869	BS32F VISE PLATE B	1	
30	BS878	B32F VISE SCREW GUIDE	1	
31	BS877	B32F VISE SCREW	1	
32	81170	THRUST WASHER AS1528	3	
33	84326	OILLESS DRY METAL BS120/170	1	
34	83042	R-PIN 6x30	1	
35	BS879	VISE HANDLE	1	
36	70543	ROTATION GRIP	1	
37	BS866	B32F FLAT VISE	1	

