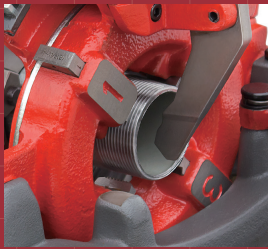


Durable threading for high pressure and airtight threading !!

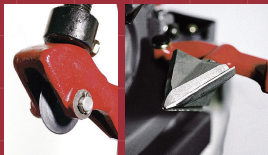
BEAVER SERIES

For Water, Gas, Electricity pipe, Stainless steel pipes threading, and also for Bolt threading.



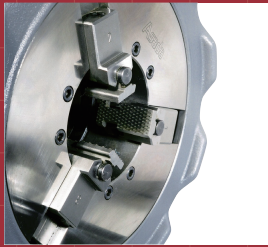
Die-Head & Dies

- Die-Head equipped with automatic profiling system and designed to reduce cut resistance for precise cut threads. Dies made of special pre-heat treated steel, ensuring long life and easy threading.



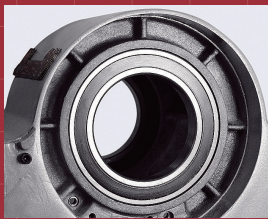
Cutter & Reamer blade

- Designed for Beaver series, with the most suitable shaped blade tip allows sharp cut and durability.



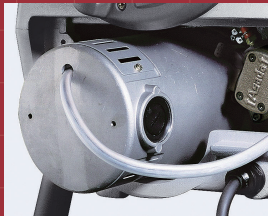
Hammer chuck

- Outer ring designed to grip easily and to grab pipes firmly with less power. The Jaw Body is wider giving greater load capacity and durability. Jaw Insert improves the centripetal clamping feature.



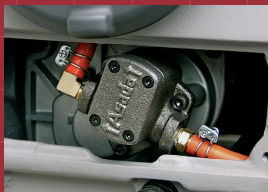
Spindle support

- Spindle is supported by Sealed Ball Bearing, ensuring correct alignment and continued accuracy through lack of wear.



Powerful electric motor

- Class F insulation grade on the motor allows continuous operation. More than sufficient Horse Power: Beaver 50 – 750W, Beaver 80 & 100 – 1,140W.



Cutting oil pump

- The high capacity of Gear Pump operates even at low revolutions to assure precise threads.

For Water, Gas, Electricity Pipe, and Bolt threading

Beaver 25

BSPT 220-230V
Code No. **BE25S**

NPT 220-230V
Code No. **B25SN**

BSPT 240V
Code No. **BE25D**

1/4" ~ 1"

Optional item Pipe : 1/4-1"
Bolt : 3/8-1" M10-24mm
Conduit : 19-39mm 1/2-1"

**EASY TO CARRY!
HIGH POWER!!**



Item	Code No.	Weight	Spindle Speed	Motor	Standard Accessories
25	BSPT BE25S	19kg	52min ⁻¹	220-230V	Auto Die-Head : 1/2 ~ 1" Dies : AM 1/2 ~ 3/4" • AM 1 ~ 1 1/2" Threading Oil White 1L (1can)
	NPT B25SN				
	BSPT BE25D			240V	

For Water, Gas, Electricity Pipe, and Bolt threading

Beaver 80

BSPT Manual
Code No. **BE80S**

BSPT Auto
Code No. **BE8AS**

NPT Manual
Code No. **BE81S**

NPT Auto
Code No. **B81AS**

1/4" ~ 3"

Optional item Pipe : 1/4-3"
Bolt : 3/8-2" M10-42mm
Conduit : 19-75mm 1/2-3"



Powerful motor 1140W!!



Item	Code No.	Weight	Spindle Speed	Motor	Standard Accessories
80	BSPT BE80S	74kg	33min ⁻¹	1,140W 220-240V	Manual Die-Head : 1/2 ~ 2", 2 ~ 3" Dies : BE 1/2 ~ 3/4" • BE 1 ~ 1 1/2" (2"), PT 2 ~ 3" Threading Oil White 4L (1can)
	NPT BE81S				
80AT	BSPT BE8AS	74kg	33min ⁻¹	1,140W 220-240V	Beaver Auto Die-Head : 1/2 ~ 2" • 2 1/2 ~ 3" Dies : BE 1/2 ~ 3/4" • BE 1 ~ 1 1/2" (2"), AT 2 1/2 ~ 3" Threading Oil White 4L (1can)
	NPT B81AS				

For Water, Gas, Electricity Pipe, and Bolt threading

Beaver 50

BSPT Manual Code No. **BE51S** BSPT Auto Code No. **B51AS** NPT Manual Code No. **BE51N** NPT Auto Code No. **B51AN**

1/4" ~ 2"

Optional item
Pipe : 1/4~2"
Bolt : 3/8~2" M10~42mm
Conduit : 19~51mm 1/2~2"

Movie



Movie



BEST SELLER!!



Item	Code No.	Weight	Spindle Speed	Motor	Standard Accessories
50	BSPT BE51S	44kg	40min ⁻¹	750W 220-240V	Manual Die - Head : 1/2~2" Dies : BE 1/2~3/4"·BE 1~1 1/2" (2") Threading oil White 4L (1can)
	NPT BE51N				
50AT	BSPT B51AS	44kg	40min ⁻¹	750W 220-240V	Beaver Auto Die - Head : 1/2~2" Dies : BE 1/2~3/4"·BE 1~1 1/2" (2") Threading Oil White 4L (1can)
	NPT B51AN				

For Water, Gas, Electricity Pipe, and Bolt threading.

Beaver 100

BSPT Auto Code No. **BE1AS** NPT Auto Code No. **BE1AN**

1/4" ~ 4"

Optional item
Pipe : 1/4~4"
Bolt : 3/8~2" M10~42mm
Conduit : 19~75mm 1/2~3"

Movie



2 stage speed system helps to cut off any sizes of pipes!!



Item	Code No.	Weight	Spindle Speed	Motor	Standard Accessories
100	BSPT BE1AS	105kg	48·18min ⁻¹ (2 speed)	1,140W 220-240V	Beaver Auto Die - Head : 1~2", 2 1/2~4" Dies : BE 1/2~3/4"·BE 1~1 1/2" (2"), AT 2 1/2~4" Threading Oil White 4L (1can)
	NPT BE1AN				

Main Applicable Die - Heads



Beaver Auto Type	Code No.	Applicable Model
BSPT	BE 1/2~1"	BE380
	BE 1/2~2"	BE001
	AT 1/2~3/4"	BE01A
	AT 1~2"	52144
	AT 1/2~2"	52100
	AT 2 1/2~3"	52200
NPT	BE 1/2~1"	BE389
	BE 1/2~2"	BE01N
	BE 1/2~2" (Type RD)	BE057
	AT 1/2~2"	52500
	AT 2 1/2~3"	52600
	AT 2 1/2~4"	64350

Manual Type	Code No.	Applicable Model
BSPT	1/4~3/8" (BSW 3/8~1")	AS109
	1/4~3/8" (BSW 3/8~1")	20114
	1/2~2" (NPT 1/2~2")	63090
	BE 1/2~2" (Type RD)	BE009
	2~3" (NPT 2 1/2~3")	20127
NPT	3 1/2~4"	04110
	1/4~3/8"	AS122
	1/4~3/8"	20165
	1/2~2" (BSPT 1/2~2")	63090
	BE 1/2~2" (Type RD)	BE068
2 1/2~3" (BSPT 2~3")	20127	

For Bolt Thread (Manual)	Code No.	Applicable Model
BSW	3/8~1" (BSPT 1/4~3/8")	AS109
	3/8~1" (BSPT 1/4~3/8")	20114
	1 1/8~2"	63096
ISO Metric	10~24mm	AS110
	10~24mm	20158
	27~36mm (42mm)	63095 ※1
UNC / UNF	3/8~1"	20160
UNC	1 1/8~1 1/2"	63090 ※2

For Conduit Thread (Manual)	Code No.	Applicable Model
BSPTS(BSPP)/C	1/2~1 1/4" : C19~39mm	AS124
	1/2~1 1/4" : C19~39mm	20147
	1 1/2~3" : C51~75mm	20157
NPSM	1/2~1 1/4"	20171
	1 1/2~3"	20172
ISO Metric	16~25mm	AS134
	16~32mm	63094

For Bolt Thread	Code No.	Applicable Model
BSW	5/16~1"	10100
BSW Left	3/8~1"	10117
ISO Metric	8~24mm	10118
ISO Metric Left	8~24mm	10126
UNC / UNF	5/16~1"	10119
BSW Left	1 1/8~1 1/2"	18137

For Conduit Thread	Code No.	Applicable Model
BSPS (C)	1 1/2~3" : C51~75mm	19100
NPSM	1 1/2~3"	19119
ISO Metric	40~63mm	19122
BSPS (C)	3 1/2~4"	33100

※1 Scale Plate for 42mm is not available.
※2 Scale Plate for UNC is not available.

Pipe Cutter Blade

Cutter blade for pipe threading machines. Smooth cut surface! Long life!

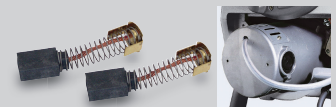
Beaver 25 : 32mm
Other : 38mm
Beaver 25 : 14mm
Other : 18mm



Item	Code No.	Applicable Model
Cutter Blade	For steel pipes	AS058
	For stainless steel pipes	AS113
Cutter Blade	For steel pipes	04510
	For stainless steel pipes	70076

Carbon Brushes

For pipe threading machine motors.



Item	Code No.	Applicable Model
Carbon Brush	6×10×14	70819
	6.5×12.5×17	70851
	6×20×24.5	70858
	9×16×19	70886
Carbon Brush Type-P	6.4×12.4×17	70929
	7×17×24.5	70919
Carbon Brush MD (※For Mitsubishi motor)	6.5×12.5×17	70706

※ Only available for a motor with a cream colour cap (For black cap is not available).

Dies

For Taper Pipe Thread (Beaver, Astronic, Piset, Mini-Con)

Standard	Size	Code No.	Material	T.P.I.	Suitable Die-Head		
BSPT	AM1/2~3/4"	AS086	Alloy	14	Beaver Auto (Beaver25, AS1, 1.5)		
	AM1~1 1/2"	AS087		11			
	AM1/2~3/4"	AS111	HSS	14	Beaver Auto (Beaver25, AS1, 1.5)		
	AM1~1 1/2"	AS112		11			
	BE1/2~3/4"	89266	Alloy	14	Beaver Auto (Beaver, Astronic)		
	BE1~2"	89267		11			
	M/AT1/2~3/4"	89211		14			
	M/AT1~2"	89227		11			
	AT2 1/2~3"	89228		11			
	AT2 1/2~4"	59803		11			
	AT3 1/2~4"	89229		11			
	AT5~6"	89244		11			
	AT1/2~3/4"	89203		HSS		14	Beaver Auto (Beaver, Astronic)
	AT1~2"	89248				11	
	AT2 1/2~3"	89249	11				
	AT2 1/2~4"	59966	11				
	A1~2" (LARGE)	89133	Alloy	11	Automatic (A-Die-Head)		
	A2 1/2~3" (LARGE)	89118		11			
	A3 1/2~4" (LARGE)	89131		11			
	A5~6" (LARGE)	89132		11			
	A1~2" (LARGE)	89160	HSS	11	Automatic (A-Die-Head)		
	A2 1/2~3" (LARGE)	89205		11			
	1/4~3/8"	89046	Alloy	19	Manual		
	M/AT1/2~3/4"	89266		14			
	M/AT1~2"	89267		11			
	M/AT1/2~3/4"	89211		14			
	M/AT1~2"	89227		11			
	1 1/2~2"	89049		11			
	2~3"	89051		11			
	3 1/2~4"	89052		11			
1/4~3/8"	89053	19					
1/2~3/4"	89203	14					
1~1 1/2"	89248	HSS	11	Manual			
1 1/2~2"	89056		11				
2~3"	89142		11				
3 1/2~4"	89184		11				
1/2~3/4" Mini-Con	89036	Alloy	14	Mini-Con 82, 104			
1~1 1/4" Mini-Con	89037		11				
AT1/2~3/4" (For Steel Pipe)	89255	HSS	14	Auto (Beaver, Astronic, Supermatic)			
AT1~2" (For Steel Pipe)	89256		11				

Standard	Size	Code No.	Material	T.P.I.	Suitable Die-Head
NPT	AM1/2~3/4"	AS120	Alloy	14	Beaver Auto (Beaver25, AS1, 1.5)
	AM1~1 1/2"	AS121		11.5	
	M/AT1/2~3/4"	89101	Alloy	14	Beaver Auto (Beaver, Astronic)
	M/AT1~2"	89102		11.5	
	AT2 1/2~3"	89245		8	
	AT2 1/2~4"	59912		8	
	AT3 1/2~4"	89246		8	
	AT5~6"	89247		8	
	1/2~3/4"	89157	HSS	14	Beaver Auto (Beaver, Astronic)
	1~2"	89158		11.5	
	2 1/2~3"	89282		8	
	2 1/2~4"	59997		8	
	1/4~3/8"	89100	Alloy	18	Manual
	M/AT1/2~3/4"	89101		14	
	M/AT1~2"	89102		11.5	
	1 1/2~2"	89103		11.5	
	2 1/2~3"	89258		8	
	3 1/2~4"	89105		8	
	1/4~3/8"	89274		18	
	1/2~3/4"	89157		14	
1~2"	89158	HSS	11.5	Manual	
1 1/2~2"	89159		11.5		
2 1/2~3"	89273		8		
2 1/2~3" (LARGE)	89171		8		
3 1/2~4" (LARGE)	89172		8		

Standard	Size	Code No.	Material	T.P.I.	Suitable Die-Head
BSPT	1/4~3/8" Type RD	89276	Alloy	19	Type RD Die-Head (Automatic)
	1/2~3/4" Type RD	89270		14	
	1~2" Type RD	89271		11	
NPT	1/4~3/8" Type RD	89277	Alloy	18	Type RD Die-Head (Automatic)
	1/2~3/4" Type RD	89278		14	
	1~2" Type RD	89279		11.5	
BSPS (BSPP)	1/2~3/4" Type RD	89280	Alloy	14	Type RD Die-Head (Manual)
	1~2" Type RD	89281		11	

Economical Dies

Standard	Size	Code No.	Type	T.P.I.	Suitable Die-Head
BSPT	M/AT 1/2~3/4"	89283	Eco	14	Beaver Auto, Manual
	M/AT 1~2"	89284		11	
	AT 2 1/2~3"	89328		11	
	M 2~3"	89329		11	
NPT	M/AT 1/2~3/4"	89285	Eco	14	Beaver Auto, Manual
	M/AT 1~2"	89286		11.5	
	AT 2 1/2~3"	89330		8	
	M 2~3"	89331		8	

For Parallel Pipe (Condit) Thread (Beaver, Astronic, Piset, Mini-Con)

Standard	Size	Code No.	Material	T.P.I.	Suitable Die-Head
C	19~25mm	89021	Alloy	16	Mini-Con, For Conduit (Manual) (0.25kgs)
	31~39mm	89022		16	
	51~75mm	89023		16	
BSPS (BSPP)	1/2~3/4"	89024	Alloy	14	Mini-Con, For Conduit (Manual) (0.25kgs)
	1~1 1/4"	89025		11	
	1 1/2~2"	89026		11	
	2 1/2~3"	89027		11	
	3 1/2~4"	89145	Alloy	11	Mini-Con 104 (0.25kgs)
	3 1/2~4" (LARGE)	89071		11	
	1/2~3/4"	89259	HSS	14	Mini-Con, For Conduit (Manual) (0.25kgs)
	2 1/2~3"	89262		11	

Standard	Size	Code No.	Material	T.P.I.	Suitable Die-Head
NPSM	1/2~3/4"	89148	Alloy	14	Mini-Con, For Conduit (Manual) (0.25kgs)
	1~1 1/4"	89149		11.5	
	1 1/2~2"	89150		11.5	
	2 1/2~3"	89151		8	
	1/2~3/4"	89010		14	
	1~2"	89011		11.5	
	3 1/2~4"	89152		8	
	3 1/2~4"	89272		8	

Standard	Size	Code No.	Material	T.P.I.	Suitable Die-Head
Metric Conduit	16~20mm	89110	Alloy	1.5mm	For Conduit (Manual) (0.6kgs)
	25~32mm	89111		1.5mm	
	16~32mm	89208		1.5mm	
	40~63mm	89209		1.5mm	

Dies

For Bolt Thread (Beaver, Astronic, Piset, Mini-Con, Bolt Machine)

Standard	Size	Code No.	Material	T.P.I.	Suitable Die - Head	
BSW	5/16"	89079	Alloy	18	No.1, Mini-Con	
	3/8"	89080	Alloy	16	25Pro No.1 For Bolt (Manual)	
	1/2"	89081		12		
	5/8"	89082		11		
	3/4"	89083		10		
	7/8"	89084		9		
	1"	89085		8		
	1 1/8 ~ 1 1/4"	89143		Alloy		7
	1 3/8 ~ 1 1/2"	89144	6			
	1 5/8 ~ 1 3/4"	89199	5			
	1 7/8 ~ 2"	89200	4.5			
	Left 3/8"	89086	Alloy		16	No.1
	Left 1/2"	89087		12		
	Left 5/8"	89088		11		
	Left 3/4"	89089		10		
	Left 7/8"	89090		9		
	Left 1"	89091		8		
	5/16"	89290		N-Alloy	18	
	3/8"	89291	16			
	1/2"	89292	12			
	5/8"	89293	11			
	3/4"	89294	10			
	7/8"	89295	9			
	1"	89296	8			
	5/16"	18503	HSS	18	No.1, Mini-Con	
	3/8"	18504		16		
	1/2"	18505		12		
	5/8"	18506		11		
	3/4"	18507		10		
	7/8"	18508		9		
	1"	18509		8		
	1 1/8 ~ 1 1/4"	18510	HSS	7	No.2	
1 3/8 ~ 1 1/2"	18512	6				
1 1/8 ~ 1 1/4"	89225	7				
1 3/8 ~ 1 1/2"	89226	6				
1 5/8 ~ 1 3/4"	89275	5				
Left 3/8"	18513	HSS		16		No.1 No.2
Left 1/2"	18514			12		
Left 5/8"	18515		11			
Left 3/4"	18516		10			
Left 7/8"	18517		9			
Left 1"	18518		8			
Left 1 1/8 ~ 1 1/4"	18519		HSS	7	No.2	
Left 1 1/2"	18521	6				

Standard	Size	Code No.	Material	T.P.I.	Suitable Die - Head		
Metric	8mm	89001	Alloy	1.25mm	25Pro, No.1, Mini-Con		
	10mm	89002	Alloy	1.5mm	25Pro No.1 For Bolt (Manual)		
	12mm	89003		1.75mm			
	14 ~ 16mm	89140		2mm			
	18 ~ 22mm	89141		2.5mm			
	24mm	89009		3mm			
	27mm	89192		3mm			
	30 ~ 33mm	89193		3.5mm			
	36mm	89194	Alloy	4mm	For Bolt (Manual)		
	42mm	89234		4.5mm			
	Left 8mm	89164		Alloy		1.25mm	No.1
	Left 10mm	89165				1.5mm	
	Left 12mm	89166				1.75mm	
	Left 14 ~ 16mm	89167				2mm	
	Left 18 ~ 22mm	89168				2.5mm	
	Left 24mm	89169	3mm				
	Left 27mm	89230	3mm				
	Left 30 ~ 33mm	89231	Alloy	3.5mm	For Bolt (Manual)		
	Left 36mm	89232		4mm			
	Left 42mm	89233		4.5mm			
	8mm	89302		N-Alloy		1.25mm	25Pro No.1 For Bolt (Manual)
	10mm	89303	1.5mm				
	12mm	89304	1.75mm				
	14 ~ 16mm	89305	2mm				
	18 ~ 22mm	89306	2.5mm				
	24mm	89307	3mm				
	8mm	18522	HSS		1.25mm	25Pro, No.1, No.2, Mini-Con	
	10mm	18523		1.5mm			
	12mm	18524		1.75mm			
	14 ~ 16mm	18538		2mm			
	18 ~ 22mm	18539		2.5mm			
	24mm	18530		3mm			
27mm	18531	3mm					
30 ~ 33mm	18532	HSS	3.5mm	No.2			
36mm	18534		4mm				
Left 8mm	18556		HSS		1.25mm	No.1 No.2	
Left 10mm	18541				1.5mm		
Left 12mm	18542	1.75mm					
Left 14 ~ 16mm	18543	2mm					
Left 18 ~ 22mm	18544	2.5mm					
Left 24mm	18555	3mm					

Standard	Size	Code No.	Material	T.P.I.	Suitable Die - Head
UNC	5/16"	89137	Alloy	18	25Pro No.1 No.2 For Bolt (Manual)
	3/8"	89015		16	
	7/16"	89138		14	
	1/2"	89016		13	
	9/16"	89139		12	
	5/8"	89017		11	
	3/4"	89018		10	
	7/8"	89019		9	
	1"	89020		8	
	1 1/8 ~ 1 1/4"	89197		Alloy	
1 3/8 ~ 1 1/2"	89198	6			
UNC	5/16"	89312	N-Alloy	18	25Pro No.1 For Bolt (Manual)
	3/8"	89313		16	
	7/16"	89314		14	
	1/2"	89315		13	
	9/16"	89316		12	
	5/8"	89317		11	

Standard	Size	Code No.	Material	T.P.I.	Suitable Die - Head
UNC	3/4"	89318	N-Alloy	10	25Pro No.1 For Bolt (Manual)
	7/8"	89319		9	
	1"	89320		8	
UNC	1 1/4"	18536	HSS	7	No.2
	1 1/2"	18537		6	

Standard	Size	Code No.	Material	T.P.I.	Suitable Die - Head
UNF	3/8"	89038	Alloy	24	25Pro No.1 No.2 For Bolt (Manual)
	7/16"	89039		20	
	1/2"	89040		20	
	9/16"	89041		18	
	5/8"	89042		18	
	3/4"	89043		16	
	7/8"	89044		14	
1"	89045	12			

For on site grooving works

Roll Groover 640

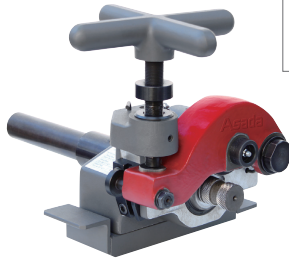


For BEAVER 50
Code No. **GR641**

For BEAVER 80
Code No. **GR642**

For BEAVER 100
Code No. **GR643**

Steel Pipe: 1"~6"
(Sch10-40)



For on-site grooving works with a portable threading machine. Robust compact unit applicable to steel pipe up to 6" Sch.40!!

Code No.	For BEAVER 50 GR641	For BEAVER 80 GR642	For BEAVER 100 GR643
Capacity*	Steel Pipe: 1"~6" (Sch10-40)		
Weight	12kg		
Size	L:280mm×W:260mm×H:250mm		
Standard Accessories	Roller Shaft set 2"~6", Connecting Shaft, Base Bracket* (for 1model only), Depth Gauge, Hex Wrench 3,4,5,6mm		

※Standard set for 2"~6". Optional Roller Shaft Set is required for 1"~1 1/2".
※Applicable to other brands' threading machines with optional Base Bracket.

For bolt threading

Bolt Machine 25Pro



Metric
Right Code No. **BM10M**

BSW
Code No. **BM10W**

UNC
Code No. **BM10U**

Left Code No. **BM1LM**

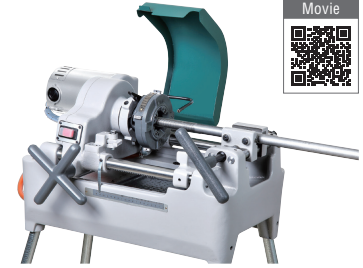
Code No. **BM1LW**

Code No. **BM1LU**

Metric : 8~24mm
BSW · UNC : 5/16"~1"



High speed & powerful bolt threading machine at compact unit.



Bolt Standard	Metric	BSW	UNC
Code No.	Right BM10M Left BM1LM	BM10W BM1LW	BM10U BM1LU
Capacity	8-24mm	5/16"-1"	5/16"-1"
Motor	220-240V	1,140W	*Voltage made to order
Spindle Speed	80rpm (No load)		
Weight	45kg		
Dimensions	L:600×W:450×H:380mm		
Standard	Die-Head 8-24mm	BSW 5/16"~1"	UNC 5/16"~1"
Accessories	Dies 12mm & 14-16mm	BSW 1/2" & 5/8"	UNC 1/2" & 5/8"

※UNF thread is applicable with UNF dies on UNC model.
※Optional dies for Metric Conduit up to 32mm is available.

For manufacture of short length nipples

Nipplemax

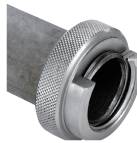


Making nipple from pipe off-cuts. The NIPPLEMAX makes short nipple easily in any length.

Code No.	Description	Code No.	Description
36001	Set 1 (1/2 ~ 1 1/4")	36140	1 1/2"
36002	Set 2 (1/2 ~ 1")	36150	2"
36003	Set 3 (1/2, 3/4")	36160	2 1/2"
36100	1/2"	36170	3"
36110	3/4"	36180	3 1/2"
36120	1"	36190	4"
36130	1 1/4"	86077	Steel Case (1/2 ~ 1 1/4")

For precision test of taper screws (JIS B0203)

Taper Thread Gauge



Easy to maintain and lowers your gauging cost. Accurate method of checking taper thread (BSPT).



Code No.	Description	Code No.	Description
56103	BSPT 1/2"	56118	BSPT 3"
56104	BSPT 3/4"	56119	BSPT 4"
56105	BSPT 1"	56100	BSPT 1/2 - 1" Set with case
56114	BSPT 1 1/4"	56127	BSPT 1/2 - 2" Set with case
56115	BSPT 1 1/2"	56130	BSPT 1/2 - 3" Set with case
56116	BSPT 2"	56126	BSPT 1/2 - 4" Set with case
56117	BSPT 2 1/2"		

For manufacture of short length nipples

Nipple Chuck

Code No. **01810**

Code No. **01850**



For inner coated pipes, Nipple Chuck is available.

Code No.	Description
01810	BSPT 1/2~2" Set
01850	NPT 1/2~2" Set

For bolt and conduit pipes

Threading Oil



White



Red



Cool

Assures long Dies life. White gives excellent threading results and cooling capacity and can be washed out easily with water afterwards. Red is for general threading use.

Code No.	Description	Code No.	Description
85629	4L White	Available with request	4L Cool
85630	16L White	Available with request	16L Cool
85631	200L White	85640S	200L Cool
85628	4L Red		
85632	200L Red		